

OWI 35C-7 PIPE SPINNER



OIL WORKS, INC.

.... manufactures the OWI 35C-7 pipe spinner at our facility in Odessa, TX. We offer new and rebuilt units, and stock a full line of replacement parts and assemblies.

New and remanufactured units are available for exchange or outright sale. Complete service, parts, and repair available on all makes and models of pipe spinners.

OIL WORKS, INC.

P.O. Box 69170

Odessa, TX 79769

Tel: (432) 381-5265

Fax: (432) 381-7526

WWW.OILWORKSINC.COM

OILWORKSINC@OILWORKSINC.COM

TABLE OF CONTENTS

	Page
I. TABLE OF CONTENTS	1
INTRODUCTION	2
GUARANTEE	3
II. MAINTENANCE	4
A. CLEANING	4
B. LUBRICATION	4
1. Air Motor	4
2. Reducer (Model OWI 35C-7)	4
3. Idler Sprockets	4
4. Adjustment Screw	4
5. Chain	5
C. ADJUSTMENT AND REPAIR	5
1. Air Motor	5
2. Idler Sprockets	5
3. Chain Replacement	5
4. Safety Cables and Springs	5
5. Air Cylinder Assembly	6
6. Throttle and Arm Actuator Valves	6
III. OPERATION	7
A. OWI 35C-7 RIG UP	7
1. Proper Suspension	7
2. How to Adjust to Desired Pipe Size	7
3. Exhaust Hose	7
B. TO OPERATE	8
1. Pipe Engagement	8
2. Spinning Pipe	8
3. Reversing Rotation	8
IV. SPECIFICATION SHEET	9
V. ASSEMBLY DRAWINGS	
A. OWI 35C-7 PIPE SPINNER	
1. FRONT VIEW	10
2. TOP VIEW	11
3. SIDE VIEW	12
B. OWI REDUCER ASSEMBLY	13
C. AIR MOTOR (GAST)	14
D. THROTTLE VALVE ASSEMBLY	15
E. VERSA VALVE ASSEMBLY	16
F. 7" CYLINDER ASSEMBLY	17
G. DRIVE ROLLER ASSEMBLY	18
H. IDLER SPROCKET ASSEMBLY	19

INTRODUCTION

SAFETY

The OWI 35C-7 virtually eliminates the danger of costly rig floor accidents and injuries caused by conventional methods of using spinning chains.

The crew and equipment on the rig floor are free from excess foreign matter being thrown about to cause eye injuries or soiled clothing. The OWI 35C-7 is extremely clean in its operation and crews appreciate this factor.

ECONOMY

More constant make up torque eliminates forked lines and reduces heat and wear on cathead clutches, whereby constant torque measurement is maintained. The OWI 35C-7 saves costly repairs to make up cathead clutches due to overheating and fatigue.

CONCLUSION

Engineering logic coupled with existing adverse conditions, leads to the conclusion that this tool has many great applications in our modern day oilfield.

GUARANTEE and Field Service

Inter-American Oil Works, Ltd. wants to provide all OWI 35C-7 users with the best tool possible along with the highest degree of dependability and satisfaction. With this in mind, we offer the following guarantee:

Your OWI 35C-7 must be free of material and workmanship defects for a period of six months from the date of delivery. If any part fails because of a manufacturing defect within that period of time that part will be replaced by Inter-American Oil Works, Ltd.

Replacement of parts will be accomplished either at Inter-American Oil Works, Ltd. or at a designated service point. This guarantee does not include the chain as its normal replacement cycle usually falls within this six month period unless it can be established that the failure was caused by a defect and not from normal wear and tear or misuse of the tool.

Inter-American Oil Works, Ltd. liability is limited to replacement of defective parts only and does not include the cost of labor, communications, transportation or handling connected with the replacement of such parts.

Inter-American Oil Works, Ltd. will in no event be liable for consequential damages or contingent liabilities arising out of the failure of any parts to operate properly.

No expressed, implied, or statutory guarantee other than herein set forth is made, or authorized to be made, by Inter-American Oil Works, Ltd.

CAUTION

Factory specifications for pneumatics, lubricants, adjustments and safety precautions as set forth in the operations and maintenance manual are for the mutual protection of the owner and the company. Failure to adhere to these specifications can reduce the efficiency or life of the equipment.

II MAINTENANCE

Since the corrosive environment normally encountered at a drilling site, especially offshore, is extremely damaging to metal surfaces, all possible care should be taken to protect the OWI 35C-7 through frequent washings and lubrication. Please consider the following recommendations as a minimum requirement.

A. CLEANING

The OWI 35C-7 should be washed with rig soap and a brush after each trip or when it visibly needs it.

B. LUBRICATION

1. Air Motor (Gast)

Located on the back of the air motor are two oil plugs. Remove cap and pump oil into each hole until full. This must be done prior to each trip for good air motor life. An airline lubricator must also be used during operation and should be set at 1-3 drops per minute. (Use #10 pneumatic tool oil, NEVER use automotive engine oil.)

2. Reducer Assembly (Model OWI 35C-7)

This unit is grease lubricated. The grease level should be checked at least every 24 operating hours. This is accomplished as follows: Remove plug NO. 6 (Ref. 13122 assembly drawing) and pump grease into the lower zerk fitting until it is forced out of the plug hole. Then pump grease into the upper zerk fitting until it is again forced out of the hole. Use only specified lubricant or equivalent. (See drawing on page 10.)

3. Idler Sprockets

Idler sprocket bearings are greased by means of zerk fittings located on the top of each pin. Pump grease into zerk fittings before each trip and after cleaning the OWI 35C-7.

4. Adjustment Screw

Access to the adjustment screw is at the rear longitudinal adjusting slot. Apply oil to the threads at each cleaning and as necessary to provide easy rotation.

5. Chain

Prior to each trip the chain must be lubed. A good copper base pipe dope is by far the first choice for this job. The next best lubricant is a zinc base pipe dope. Apply a liberal amount to the entire length of the chain on the tooth side using a dope brush. Never allow dope to coat the side that contacts the pipe. Clean this surface if necessary. This will ensure a long trouble free chain life. NEVER UNDER ANY CONDITIONS should weight material or any other dry materials be applied to the chain to increase gripping power; they will only hinder its performance.

C. ADJUSTMENT AND REPAIR

1. Air Motor

Trained personnel should do air motor servicing, but simple problems like sluggishness can be remedied by flushing with a cleaning solvent. If rebuilding is necessary, an air motor rebuild kit can be ordered from the assembly drawing and parts list.

2. Idler Sprockets

If sprockets are not free to rotate, bearings could be worn or damaged. Disassemble, clean thoroughly, and inspect if normal lubricating procedure fails to correct condition. (See section A-A and B-B on OWI 35C-7 assembly drawing.)

3. Chain Replacement

File head off one pin and drive it out, causing chain to separate. Connect new chain to old one and by turning on air motor very slowly, drive old chain out and pull new chain in. (Make sure motor is turning in proper direction.) Insert new split bushings, pins, and washers, and brad pin at both ends.

4. Safety Cables & Springs

Inspect safety cables and hanger springs (prior to each trip.) Replace immediately any part that appears to be damaged or worn. Springs and safety cables can be ordered from OWI 35C-7 assembly drawing.

5. Air Cylinder Assembly

The air cylinders should give long, trouble free service provided they are supplied with clean, lubricated air. Probable causes of malfunction are:

- (a) Dirty air will combine with the lubricating oil to "gum up" the interior walls of the ram.
- (b) O'Ring failure. In either case, remove cylinder from unit and disassemble. Wash all parts in solvent. Replace all O'Rings and seals using a rebuild kit ordered by part number. (See assembly drawing on page 11.)

6. Throttle and Arm Actuator Valves

See assembly drawings on page 13 or 14 for repair kits and parts.

III OPERATION

A. OWI 35C-7 RIG-UP

1. Proper Suspension

The OWI 35C-7 comes with two hanging springs. These provide for slight variations in vertical movement. The spinner should be suspended on a counter balanced line similar to the rig tongs.

CAUTION

MAKE SURE BACK-UP LINE IS SECURED IN THE PROPER DIRECTION TO MAKE UP TORQUE LOADS.

2. How to Adjust to Desired Pipe Size

Adjustment of the chain is achieved by first loosening the three mount bolts located on the gear reducer mount. The drive assembly should now be free to slide along longitudinal adjust slots located on top of spinner housing. On the rear of the spinner is a nut protruding from the case. Using the adjustment wrench provided, rotate this nut clockwise for smaller pipe size and counter-clockwise for larger size. For proper pipe adjustment, a gap of 1-1/4 inches should exist between chain at front when closing arms are locked in place by air rams. **MAKE SURE THE THREE MOUNT BOLTS ARE RE-TIGHTENED BEFORE OPERATING SPINNER.**

3. Exhaust Hose

The muffler on the end of the exhaust hose should be securely tied down to a stationary object. This will eliminate the chance of the muffler being damaged from "whipping around".

B. TO OPERATE

1. Pipe Engagement

Move spinner to its proper place to engage pipe and actuate cylinder air valve handle forward closing arms around pipe. Make sure valve is kept in this position long enough for cylinders to receive maximum line pressure and then release handle, trapping air pressure in the cylinders. Disengagement from pipe is achieved by actuating valve handle back away from pipe. Let arms open fully before releasing valve handle.

2. Spinning Pipe

Spin pipe by opening motor throttle valve located on console. Any RPM range can be utilized by varying the amount of valve lever movement.

3. Reversing Rotation

As an added safety feature, the OWI 35C-7 requires changing the supply/exhaust hoses before rotational direction can be reversed. This makes it impossible to have an accident by mishandling a reversing control lever.

CAUTION

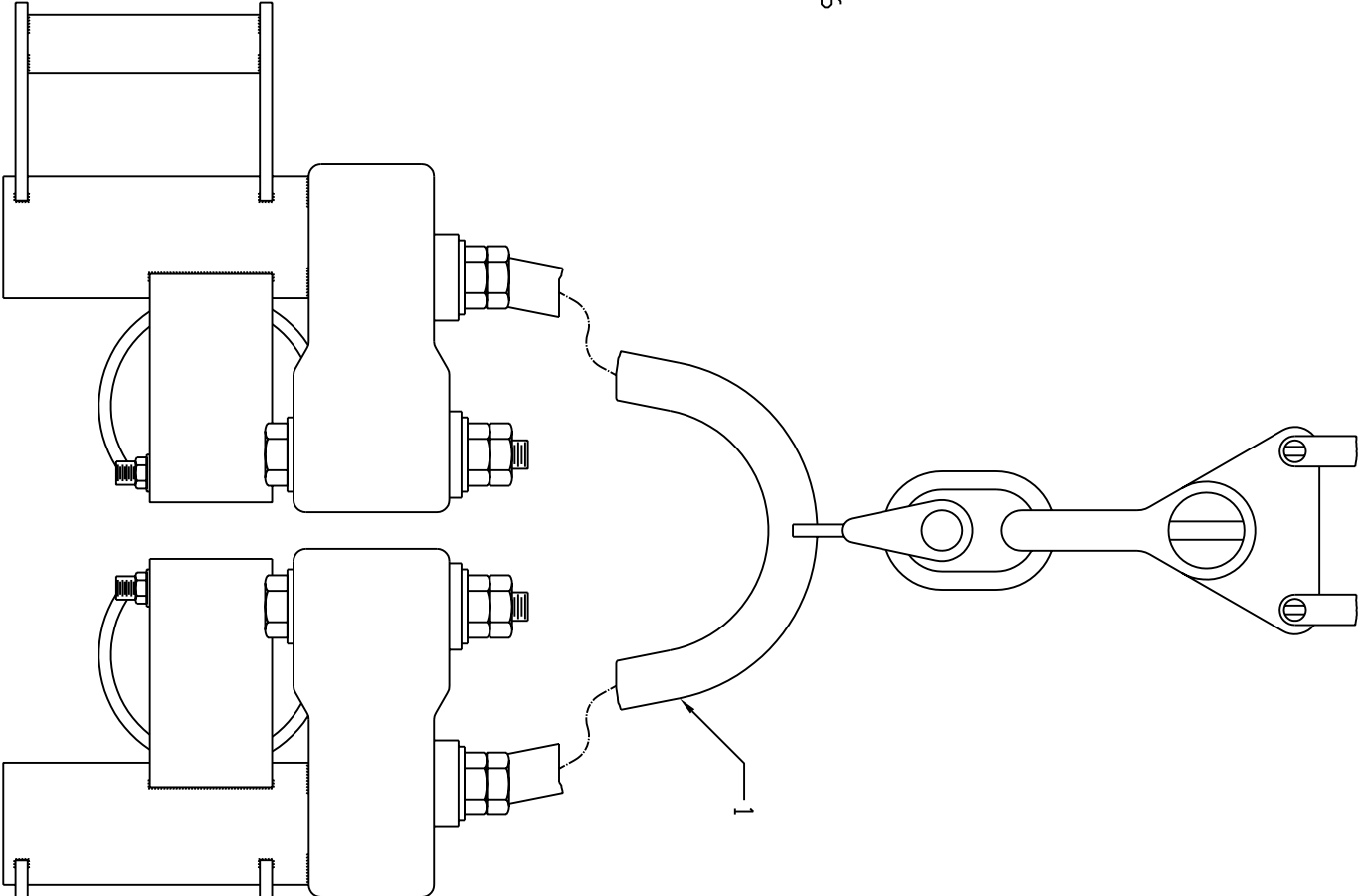
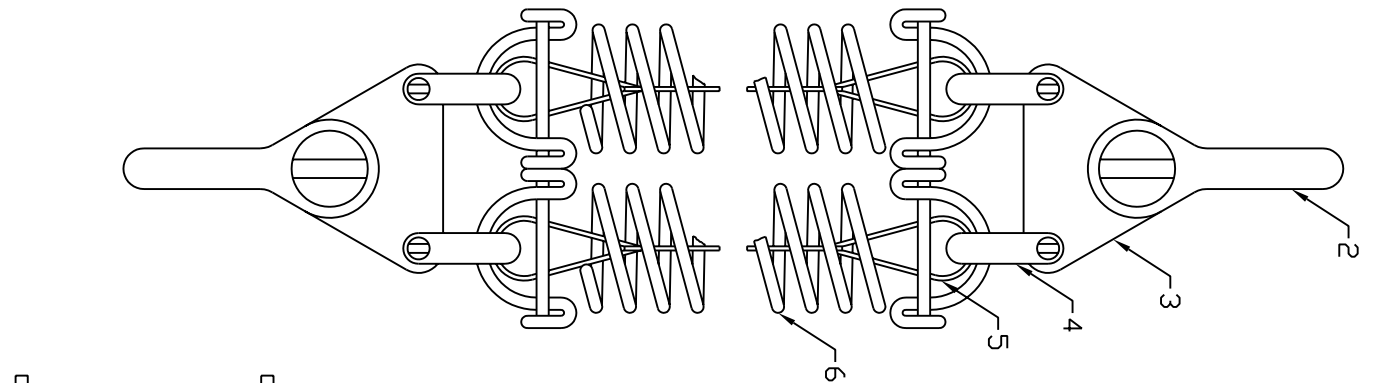
MAKE SURE BACK -UP LINE IS SECURED IN PROPER DIRECTION TO TAKE UP TORQUE LOADS.

SPECIFICATION SHEET

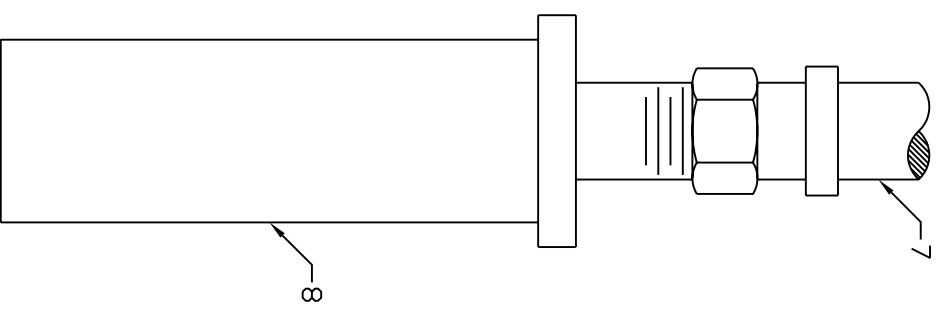
LENGTH: 42 in.
 WIDTH: 32 in.
 HEIGHT: 42 in.
 WEIGHT: 720 lbs.
 PIPE SIZE RANGE: 2-7/8" drill pipe through 7.0" drill collars
 AIR REQUIRED: 240 cfm @ 100 psi

PERFORMANCE

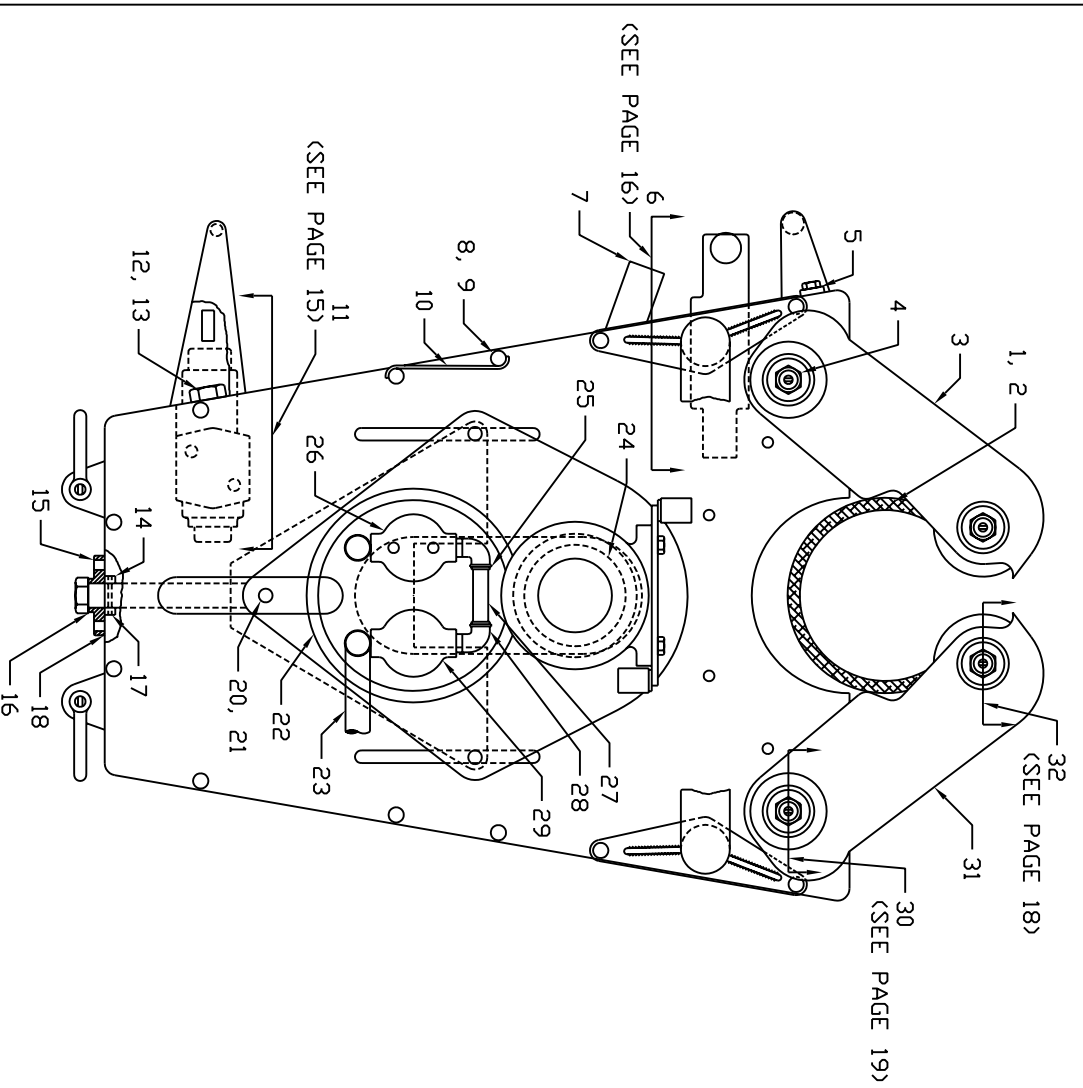
MODEL OWI 35C-7	Torque @ 100 psi @ 240 cfm No chain slip RPM at above torques	SIZE:	3-1/2"	4"	4-1/2"	5"	5-1/2"	7"
		TORQUE FT./LB.	810	930	1040	1160	1270	1620
		R.P.M.	170	150	134	120	110	85



ITEM	DESCRIPTION	PART #	QTY
1	CASE HANGER ASSEMBLY	35C-017	1
2	SHACKLE	35C-045	2
3	BRACKET, DUAL	35C-046	2
4	SHACKLE	35C-047	4
5	CABLE, SAFETY	35C-048	2
6	SPRING, HANGER	35C-049	2
7	EXHAUST HOSE ASSEMBLY	35C-030	1
8	1-1/4 EXHAUST MUFFLER	35C-028	1

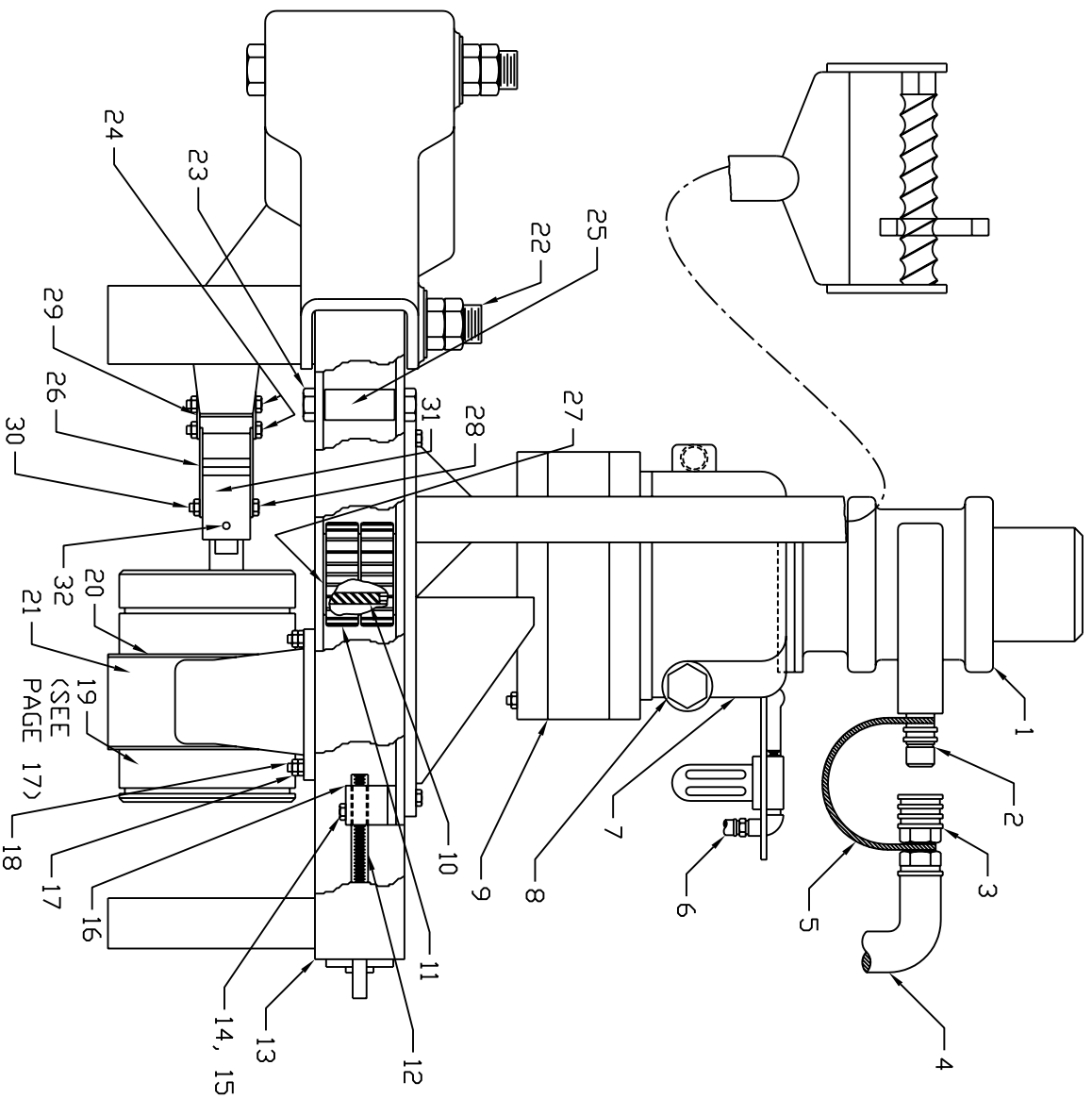


DIL WORKS, INC.
 ASSEMBLY:DWI 35C-7 PIPE SPINNER
 DESCRIPTION:DWI 35C-7 (FRONT VIEW)
 PART #35C-7 PAGE 10



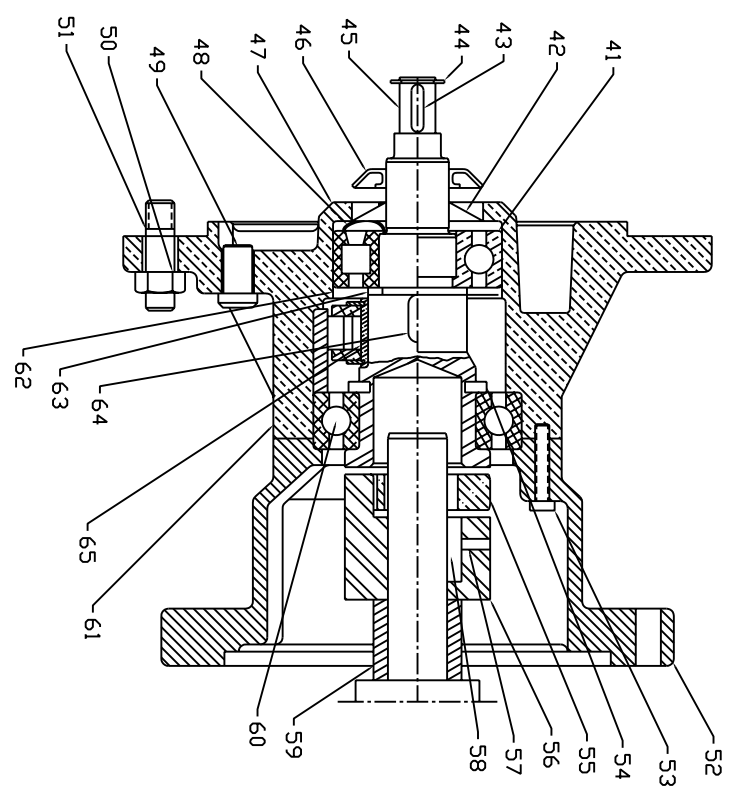
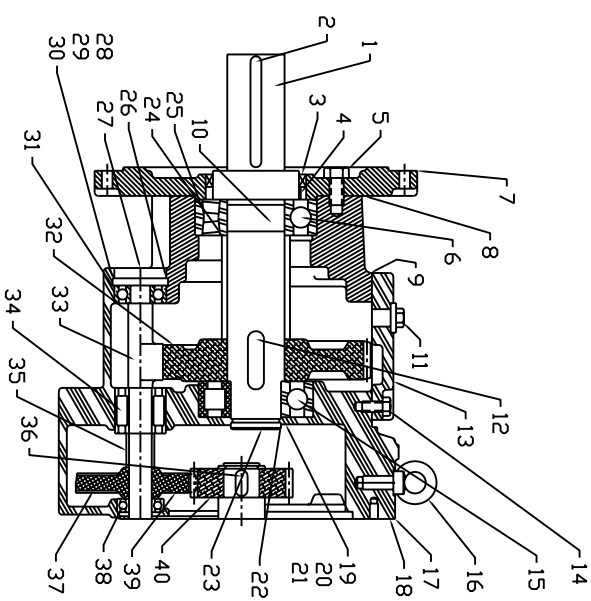
ITEM	DESCRIPTION	PART #	REQ'T
1	CHAIN, SILENT	35C-024	1
2	KIT, CHAIN REPAIR	35C-025	1
3	ASSEMBLY, ARM PIVOT (LH)	35C-008-1	1
4	FITTING, GREASE	35C-056	4
5	BOLT, HEX	35C-327	4
6	VALVE, VERSA	35C-400	1
7	BAR, PUSH	35C-014	1
8	BOLT, HEX	35C-037	8
9	WASHER, STAR LOCK	35C-044	24
10	WIRE, LOCK	35C-035	120
11	VALVE, THROTTLE	35C-300	1
12	BOLT, HEX	35C-327	4
13	WASHER, SPLIT LOCK	35C-045	8
14	SLEEVE	35C-006	1
15	BUSHING, SHOULDER	35C-033	1
16	BOLT, HEX	35C-032	2
17	PIN, SPIRAL	35C-053	1
18	BUSHING, CASE	35C-009	1
19	SHACKLE	35C-047	2
20	BOLT, HEX	35C-041	3
21	WASHER, SPLIT LOCK	35C-052	3
22	ASSEMBLY, MOUNT BRACKET	35C-060	1
23	HOSE, INTAKE TO FILTER	35C-067	1
24	RETAINER, CHAIN	35C-002	1
25	U-BOLTS W/ NUTS & LOCK WASHERS	35C-063	2
26	LUBRICATOR	35C-062	1
27	NIPPLE	35C-064	1
28	ELBOW, ST.	35C-065	4
29	FILTER	35C-061	1
30	ASSEMBLY, IDLER SPROCKET	35C-220	2
31	ASSEMBLY, ARM PIVOT (RH)	35C-008-2	1
32	ASSEMBLY, DRIVE ROLLER	35C-240	2

DTL WORKS, INC.
 ASSEMBLY:DWI 35C-7 PIPE SPINNER
 DESCRIPTION:DWI 35C-7 (TOP VIEW)
 PART #35C-7 PAGE 11



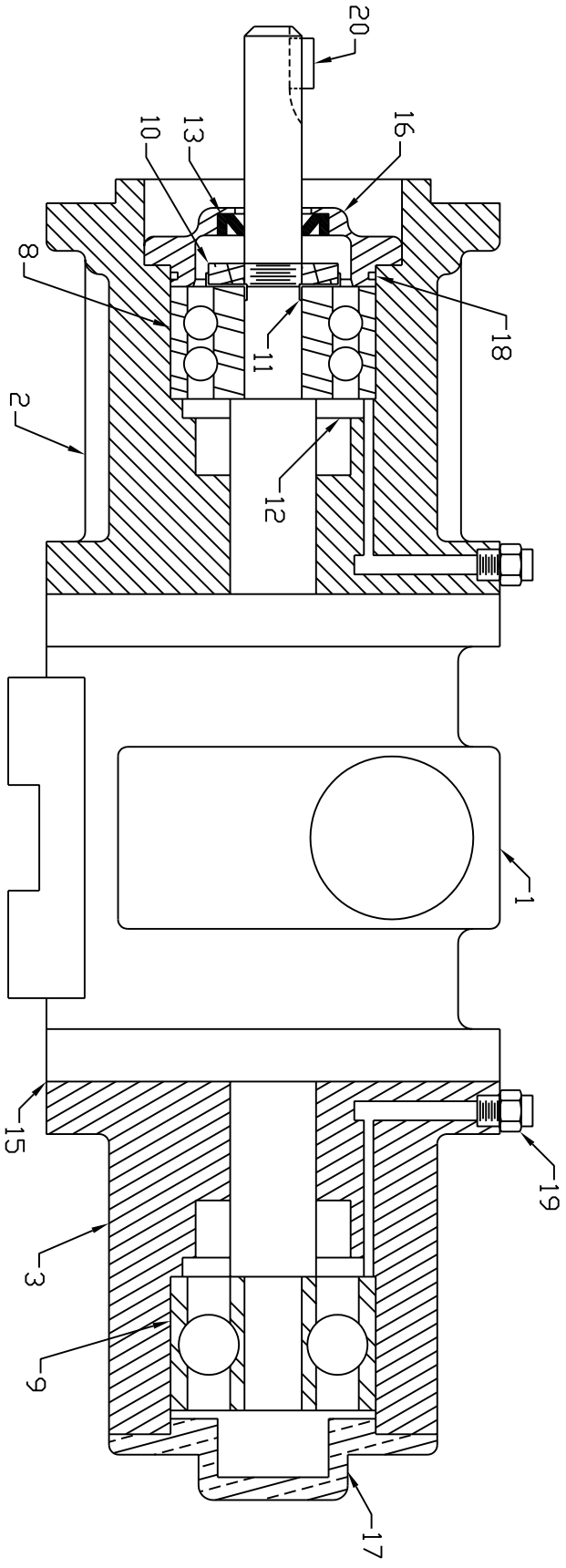
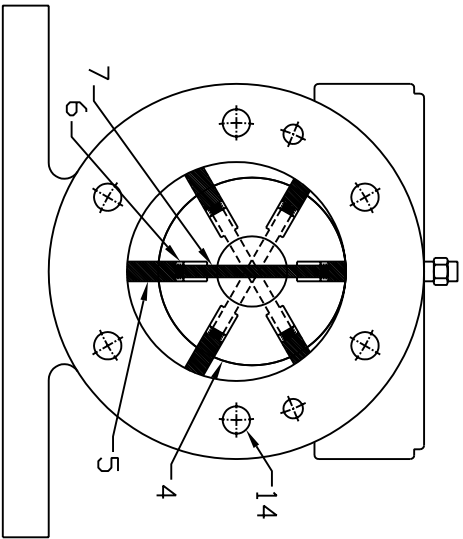
ITEM	DESCRIPTION	PART #	REQ'T
1	MOTOR, AIR	35C-500	1
2	COUPLER, 1-1/4" MALE	35C-026	2
3	COUPLER, 1-1/4" FEMALE	35C-027	2
4	HOSE, VALVE TO MOTOR	35C-029	1
5	CABLE, SAFETY	35C-020	2
6	HOSE, LUBRICATOR TO VALVE	35C-066	1
7	RETAINER, TOOL	35C-015	1
8	TOOL, ADJUST SCREW	35C-012	1
9	REDUCER, GEAR	35C-023	1
10	KEY	35C-034	1
11	SPROCKET, DRIVE	35C-010	1
12	ASSEMBLY, ADJUST SCREW	35C-007	1
13	ASSEMBLY, CASE	35C-001	1
14	BOLT, HEX	35C-057	2
15	WASHER, SPLIT LOCK	35C-045	8
16	NUT, ADJUST	35C-003	1
17	NUT, JAM	35C-040	16
18	BOLT, STUD	35C-055	8
19	ASSEMBLY, 7" CYLINDER	35C-100	2
20	RING, CYLINDER SNAP	35C-108	4
21	ASSEMBLY, RAM MOUNT	35C-016	1
22	BOLT, HEX	35C-039	4
23	NUT, FLEX LOCK	35C-042	4
24	BOLT, SHACKLE	35C-019	4
25	SPACER, CASE	35C-004	4
26	ASSEMBLY, CLEVIS PLATE	35C-013	1
27	RING, SNAP	35C-036	1
28	BOLT, CLEVIS	35C-018	2
29	SHACKLE	35C-005	4
30	NUT, FLEX LOCK	35C-043	6
31	HEAD, CYLINDER ROD	35C-106	2
32	SCREW, SOCKET HEAD SET	35C-059	2

DTL WORKS, INC.
 ASSEMBLY:DWI 35C-7 PIPE SPINNER
 DESCRIPTION:DWI 35C-7 (SIDE VIEW)
 PART #35C-7 PAGE 12



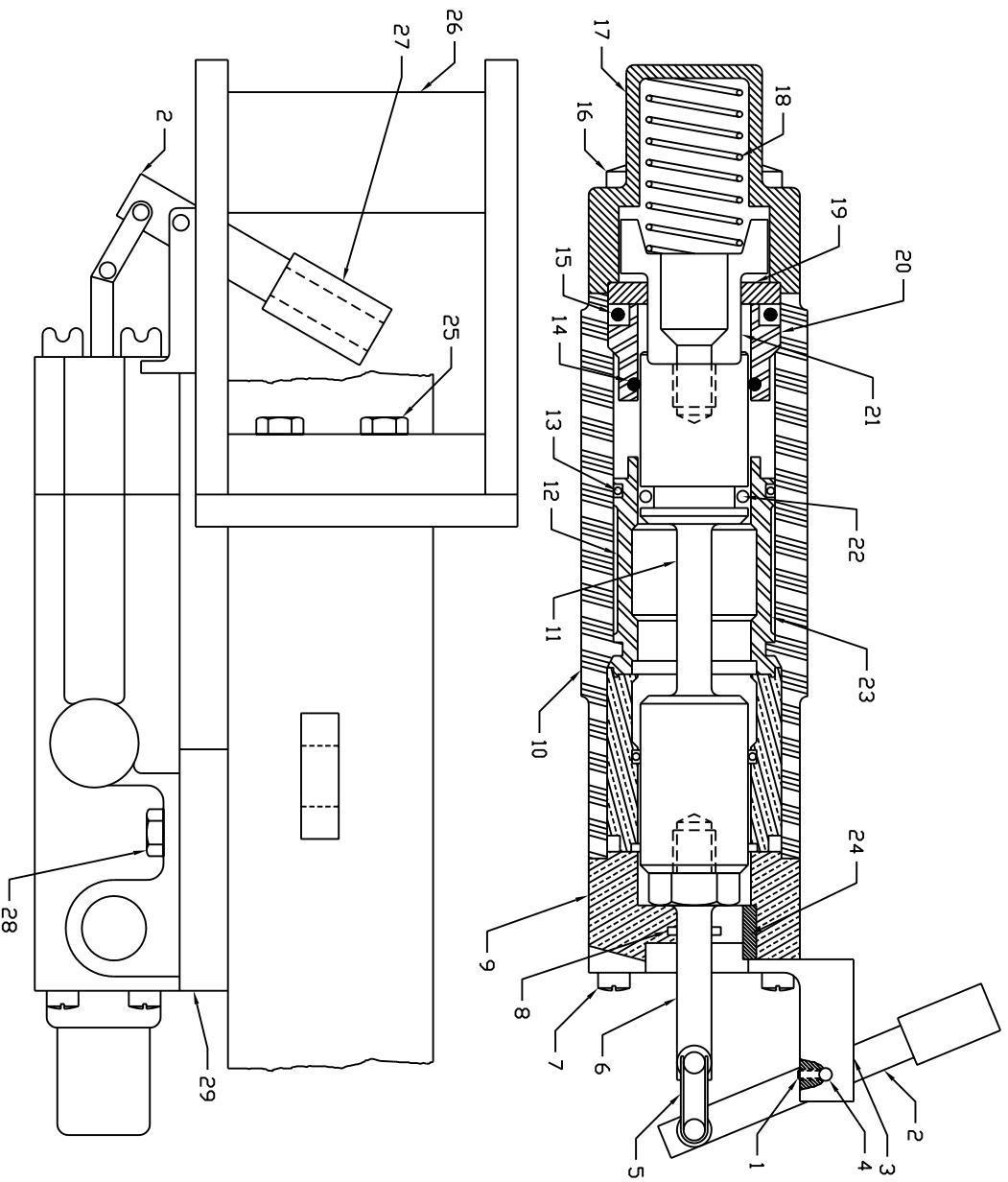
ITEM	DESCRIPTION	PART #	REQ
1	SHAFT, OUTPUT	35C-601	1
2	KEY, OUTPUT	35C-602	1
3	SEAL, DIL	35C-603	1
4	SEAL, DIL	35C-604	1
5	SCREW, HEX HEAD	35C-605	9
6	BEARING	35C-606	1
7	FLANGE, OUTPUT	35C-608	X
8	SEALANT, ANAEROBIC	35C-609	1
9	GASKET	35C-610	1
10	SPACER	35C-611	1
11	PLUG, BREATHER	35C-612	1
12	KEY	35C-612	1
13	COVER, INSPECTION	35C-613	1
14	SCREW, HEX HEAD	35C-614	8
15	BEARING	35C-615	1
16	BOLT, EYE	35C-616	1
17	CASE, GEAR	35C-617	1
18	SEALANT, ANAEROBIC	35C-618	X
19	SHIM	35C-619	X
20	SHIM	35C-620	X
21	SHIM	35C-621	X
22	WASHER, THRUST	35C-622	1
23	RING, RETAINING	35C-623	1
24	RING, NILDS	35C-625	1
25	D-RING	35C-625	1
26	RING, RETAINING	35C-626	1
27	CAP, RETAINING	35C-627	1
28	SHIM	35C-628	X
29	SHIM	35C-629	X
30	SHIM	35C-630	X
31	BEARING	35C-631	1
32	GEAR	35C-632	1
33	SHAFT, PINION	35C-633	1
34	BEARING	35C-634	1
35	SPACER	35C-635	1
36	KEY	35C-636	1
37	PLUG, DRAIN	35C-637	5
38	BEARING	35C-638	1
39	GEAR	35C-639	1
40	PINION	35C-640	1
41	BEARING	35C-641	1
42	SEAL, DIL	35C-642	1
43	KEY	35C-643	1
44	RING, RETAINING	35C-644	1
45	SHAFT	35C-645	1
46	SLINGER, DIL	35C-646	1
47	HOUSING, INPUT	35C-647	1
48	WASHER, SPRING	35C-648	1
49	PLUG, BREATHER	35C-649	1
50	NUT, HEX	35C-650	4
51	SCREW, HEX HEAD	35C-651	4
52	FLANGE, INPUT	35C-652	1
53	SCREW, HEX HEAD	35C-653	4
54	RING, RETAINING	35C-654	1
55	SPIDER	35C-655	1
56	HALF, COUPLING	35C-656	1
57	SCREW, SET	35C-657	1
58	KEY	35C-658	1
59	PIECE, DISTANCE	35C-659	1
60	BEARING	35C-660	1
61	SEALANT, ANAEROBIC	35C-661	X
62	RING, NILDS	35C-662	1
63	RING, RETAINING	35C-663	1
64	KEY	35C-664	1
65	STOP, BACK	35C-665	1

21: REPAIR KIT
 INCLUDES ITEMS NO. 5, 6, 7, 8,
 9, 11, 13, 15, & 18



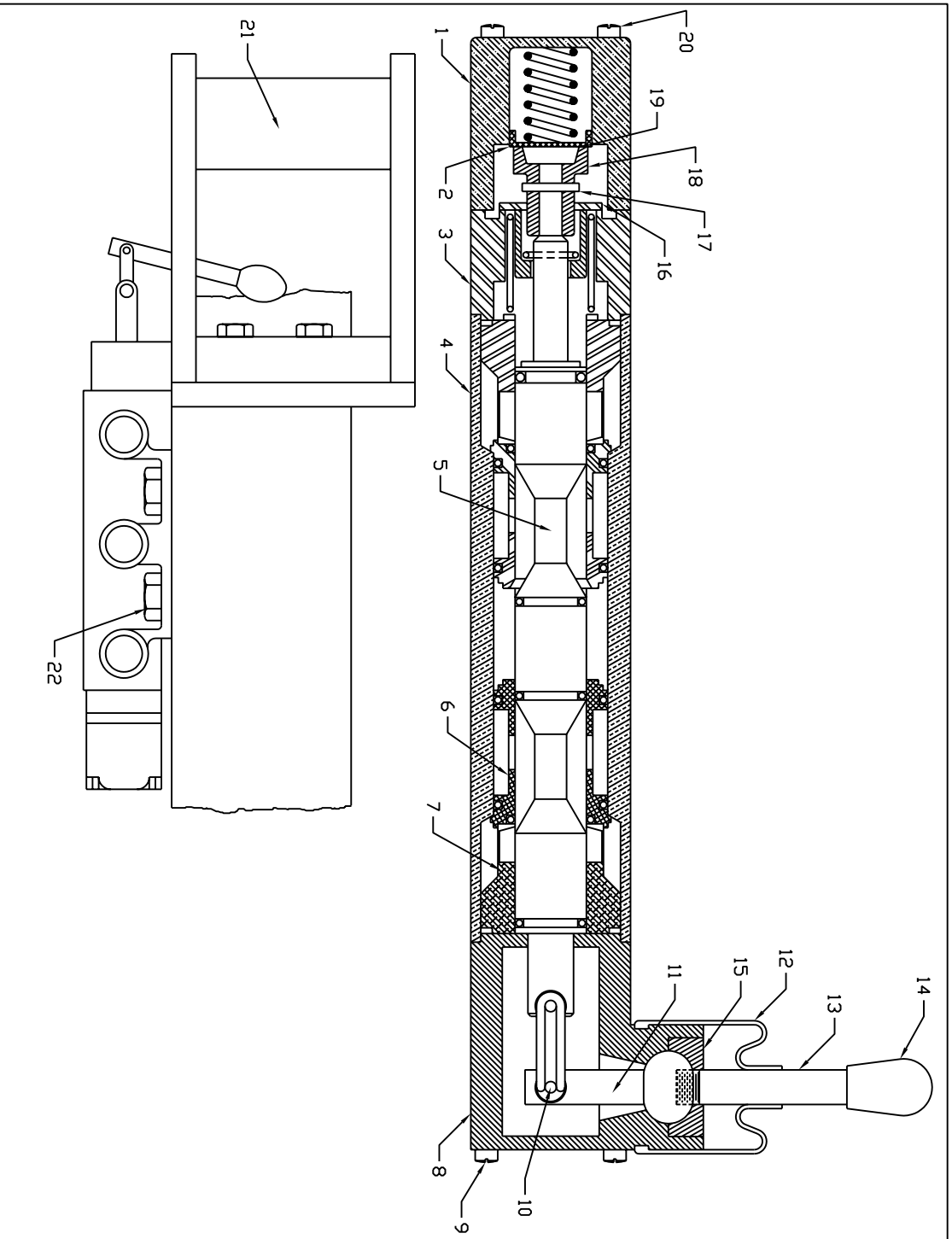
ITEM	DESCRIPTION	PART #	REQ'D
1	BODY	35C-502	1
2	PLATE, DRIVE END	35C-503	1
3	PLATE, DEAD END	35C-504	1
4	ASSEMBLY, ROTOR	35C-505	1
5	VANE	35C-506	6
6	SPRING, VANE	35C-507	6
7	PIN, PUSH	35C-508	3
8	BEARING, DRIVE	35C-509	1
9	BEARING, DEAD	35C-510	1
10	NUT, LOCK	35C-511	1
11	WASHER, LOCK	35C-512	1
12	SPACER	35C-513	2
13	SEAL	35C-514	1
14	DOWEL	35C-515	4
15	GASKET	35C-516	2
16	CAP, DRIVE END	35C-517	1
17	CAP, DEAD END	35C-518	1
18	D-RING	35C-519	2
19	DILER	35C-520	2
20	KEY, DRIVE	35C-521	1
21	KIT, AIRMOTOR REPAIR	35C-501	17

DIL WORKS, INC.
 ASSEMBLY: DWI 35C-7 PIPE SPINNER
 DESCRIPTION: MOTOR, AIR
 PART #35C-500 PAGE 14



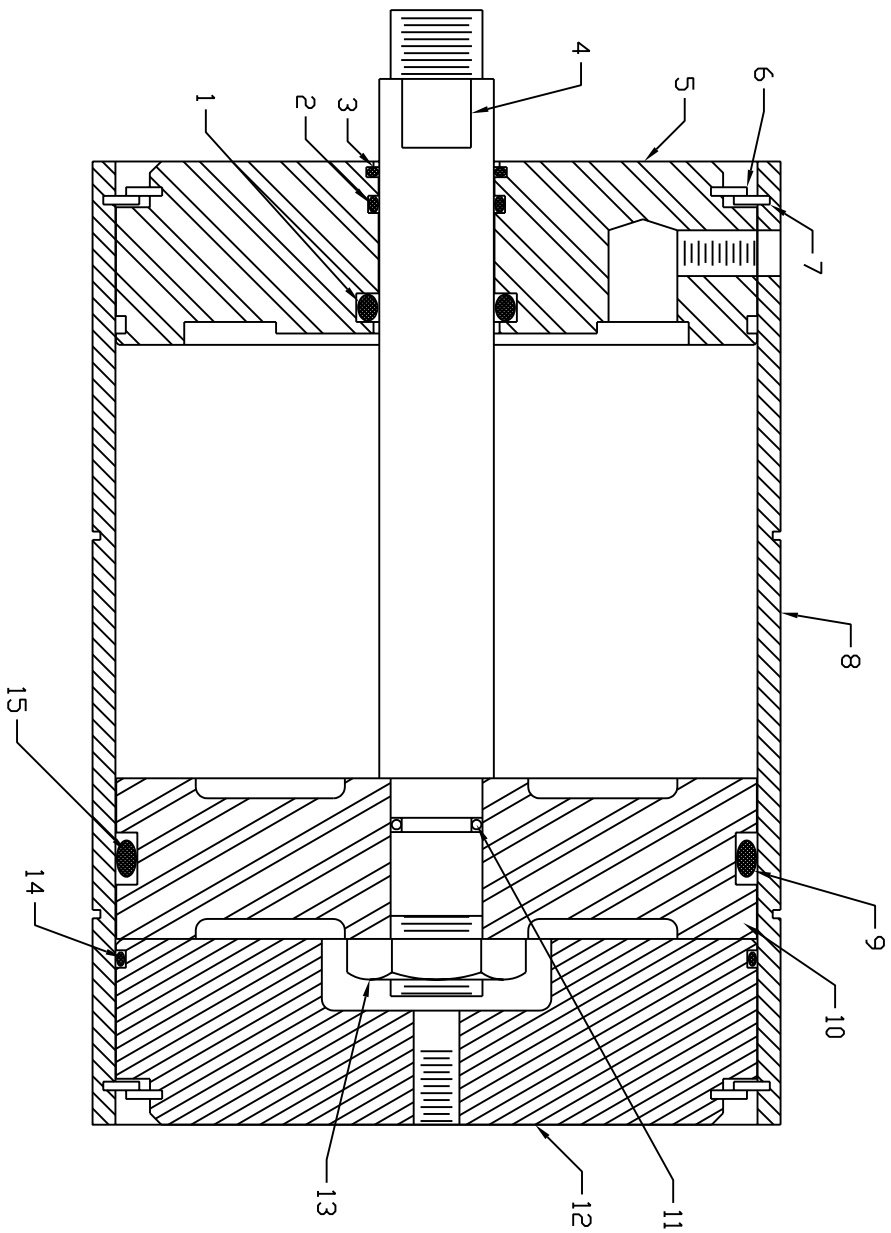
ITEM	DESCRIPTION	PART #	REQ'T
1	SCREW, SET	35C-301	1
2	ASSEMBLY, HANDLE	35C-302	1
3	BRACKET	35C-303	1
4	PIN	35C-304	1
5	ASSEMBLY, LINK	35C-305	1
6	ROD	35C-306	1
7	SCREW	35C-307	4
8	D-RING	35C-308	1
9	CAP, LEVER	35C-309	1
10	BODY	35C-310	1
11	PLUNGER	35C-311	1
12	BUSHING	35C-312	1
13	D-RING	35C-313	1
14	D-RING	35C-314	2
15	D-RING	35C-315	2
16	SCREW	35C-316	4
17	CAP - SPRING	35C-317	1
18	SPRING	35C-318	1
19	WASHER	35C-319	1
20	BEARING	35C-320	1
21	CUP, SPRING	35C-321	1
22	D-RING	35C-322	1
23	RETAINER	35C-323	1
24	FILTER	35C-324	1
25	BOLT, HEX	35C-327	4
26	ASSEMBLY, HANDLE BRACKET	35C-325	1
27	GRIP, HANDLE	35C-326	1
28	BOLT, HEX	35C-328	2
29	SPACER, VALVE	35C-329	1

DTL WORKS, INC.
 ASSEMBLY: DWT 35C-7 PIPE SPINNER
 DESCRIPTION: ASSEMBLY, THROTTLE VALVE
 PART # N/A PAGE 15



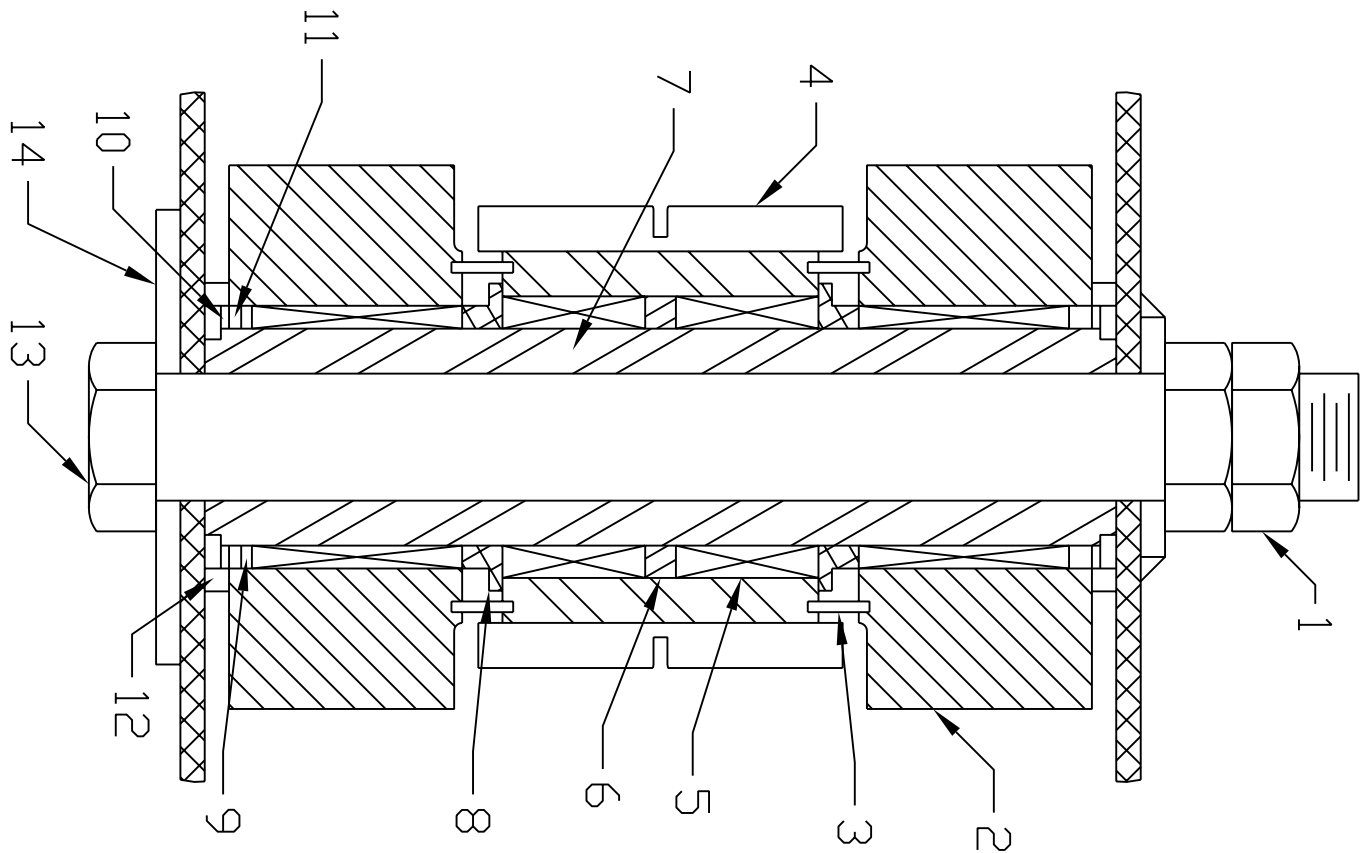
ITEM	DESCRIPTION	PART #	REQ'D
1	CAP, SPRING	35C-401	1
2	WASHER, CUP	35C-402	1
3	SPACER	35C-403	1
4	BODY	35C-404	1
5	PLUNGER	35C-405	1
6	BUSHING	35C-406	2
7	RETAINER	35C-407	2
8	CAP, LEVER	35C-408	1
9	SCREW	35C-409	4
10	ASSEMBLY, LINK	35C-410	1
11	KNUCKLE	35C-411	1
12	ASSEMBLY, BOOT	35C-412	1
13	SHAFT	35C-413	1
14	HANDLE	35C-414	1
15	SCREW	35C-415	1
16	WASHER	35C-416	2
17	PIN	35C-417	1
18	CUP, SPRING	35C-418	1
19	SPRING	35C-419	2
20	SCREW	35C-420	4
21	HANDLE, CASE	35C-070	1
22	SCREW, VALVE MOUNTING	35C-421	3

DILL WORKS, INC.
 ASSEMBLY: DWT 35C-7 PIPE SPINNER
 DESCRIPTION: ASSEMBLY, VERSA VALVE
 PART # 35C-400 PAGE 16



ITEM	DESCRIPTION	PART #	QTY
1	U-CUP	35C-112	1
2	D-RING, GLAND	35C-117	1
3	WIPER	35C-113	1
4	ROD, CYLINDER	35C-102	1
5	GLAND, CYLINDER	35C-103	1
6	RING, BASE/GLAND SNAP	35C-110	2
7	RING, BASE/GLAND SNAP	35C-109	2
8	BODY, CYLINDER	35C-101	1
9	BACK-UP	35C-111	2
10	PISTON, CYLINDER	35C-102	1
11	D-RING, ROD	35C-115	1
12	BASE, CYLINDER	35C-104	1
13	NUT, CYLINDER ROD LOCK	35C-107	1
14	D-RING, BASE/GLAND	35C-116	2
15	D-RING, PISTON	35C-114	1

DIL WORKS, INC.
 ASSEMBLY: DWI 35C-7 PIPE SPINNER
 DESCRIPTION: 7" CYLINDER ASSEMBLY
 PART #35C-100 PAGE 17



ITEM	DESCRIPTION	PART #	REQ'D
1	NUT, ROLLER JAM	35C-201	2
2	ROLLER, DRIVE	35C-243	2
3	PIN, ROLLER DOWEL	35C-246	4
4	SPROCKET, ROLLER	35C-244	1
5	BEARING, ROLLER	35C-204	4
6	SPACER, BEARING	35C-202	3
7	SHAFT, LONG ROLLER	35C-242	1
8	SLEEVE, SPACER	35C-247	2
9	RING, DRIVE ROLLER SNAP	35C-245	2
10	RING, ROLLER SNAP	35C-206	2
11	SEAL, ROLLER OIL	35C-203	2
12	SPACER, TEFLON	35C-205	2
13	PIN, DRIVE ROLLER	35C-241	1
14	WASHER, FLAT	35C-224	1

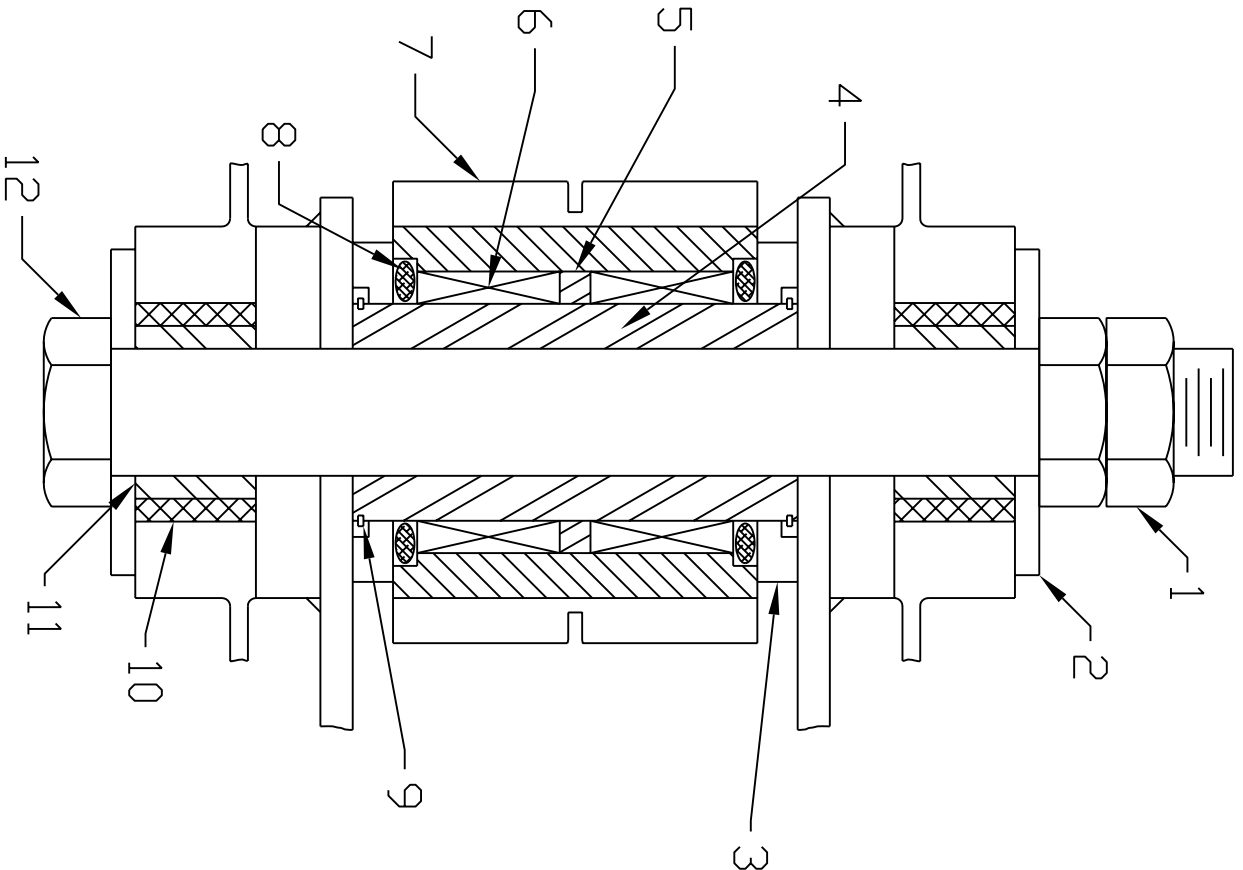
DIL WORKS, INC.

ASSEMBLY: DWI 35C-7 PIPE SPINNER

DESCRIPTION: ASSEMBLY, DRIVE ROLLER

PART # 35C-240

PAGE 18



ITEM	DESCRIPTION	PART #	REQ'D
1	NUT, ROLLER JAM	35C-201	2
2	WASHER, FLAT	35C-224	2
3	SPACER, TEFLON	35C-205	2
4	SHAFT, SHDRT ROLLER	35C-223	1
5	SPACER, BEARING	35C-202	1
6	BEARING, ROLLER	35C-204	2
7	SPROCKET, IDLER	35C-225	1
8	SEAL, ROLLER OIL	35C-203	2
9	RING, ROLLER SNAP	35C-206	2
10	BUSHING, ROLLER	35C-226	2
11	BUSHING, PIVOT	35C-222	2
12	PIN, IDLER SPROCKET	35C-221	1

DIL WORKS, INC.

ASSEMBLY: DWI 35C-7 PIPE SPINNER

DESCRIPTION: ASSEMBLY, IDLER SPROCKET

PART #35C-220

PAGE 19