

INTER-AMERICAN OIL WORKS, LTD.

OWI

TORQUE CONVERTER

MODEL C-195-OWI

PARTS MANUAL

Inter-American Oil Works, Ltd.

P.O. Box 69170

Odessa, TX 79769

(432) 381-5265

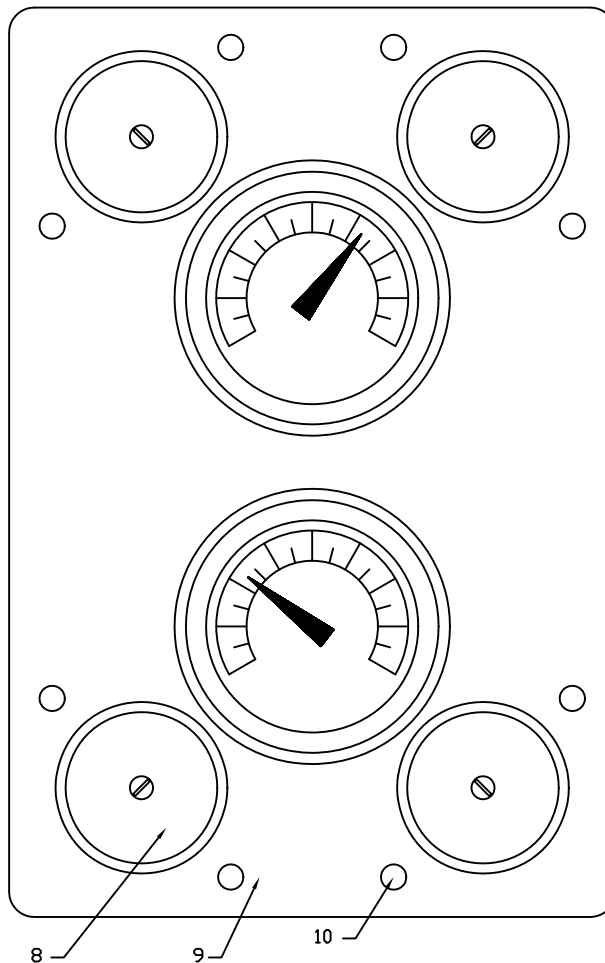
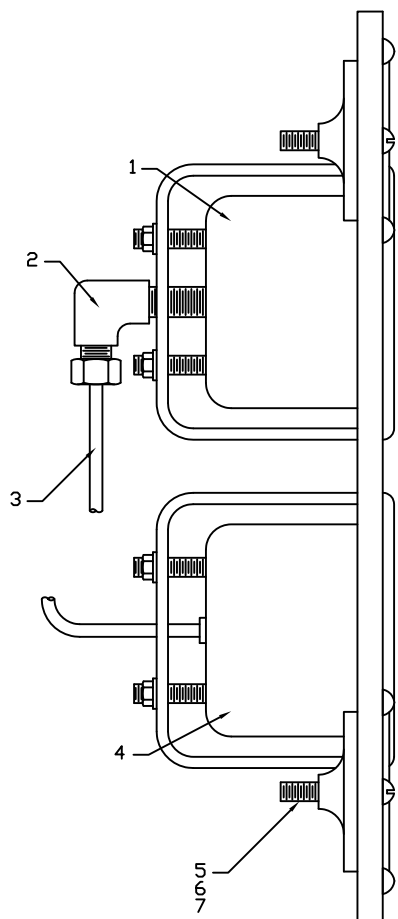
oilworksinc@oilworksinc.com




NOT AFFILIATED WITH NATIONAL-OILWELL

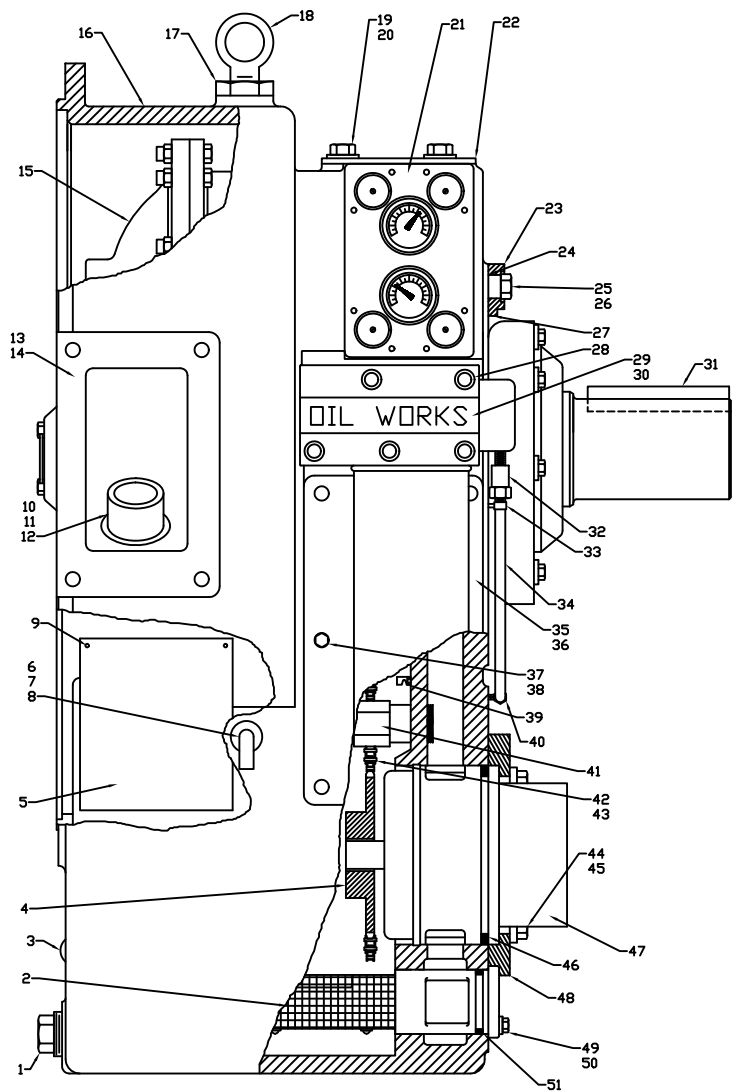
TABLE OF CONTENTS

Gauge Assembly	1
Basic Converter	2
Shaft Assembly	3
Pressure Control Valve	4
Heat Exchanger and Piping	5
Desurger and Piping	6



ITEM	NATIONAL PART #	DWI PART #	DESCRIPTION	REQ'D
1	2230068	1NA3068	GAUGE, PRESSURE	1
2	7804087	1NA3941	ELBOW 1/8" X 1/8" X 90°	1
3	7400240	1NA3942	TUBING 1/8" X 12"	1
4	2230050	1NA3050	GAUGE, TEMPERATURE	1
5	7051081-01	1NA1955	SCREW, LORD MOUNT	4
6	6330080	1NA1957	NUT, LORD MOUNT	4
7	7602012	1NA1958	WASHER, LORD MOUNT	4
8	7812012	1NA3921	MOUNT, LORD	4
9	2232052	1NA1052	PLATE, GAUGE	1
10	7817041	1NA1956	RIVET, GAUGE PANEL	8

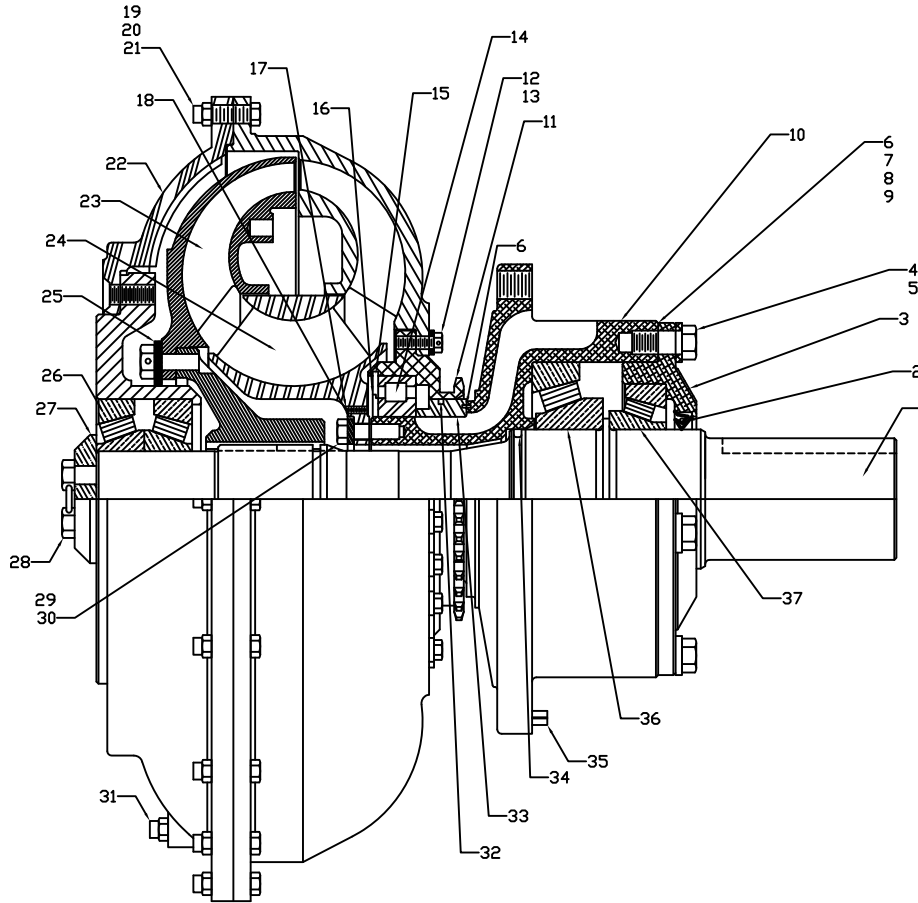
DWG# 100-0137		DATE DRAWN: 10/31/07 JW	OIL WORKS INC.
USED IN: -		ASSEMBLY: OWI C195 TORQUE CONVERTER	
EQUIPMENT: TORQUE CONVERTER		DESCRIPTION: PART LIST, GAUGE ASSEMBLY	
MODEL: C 195		PART #: 1NA1055 (2232055)	
TOLERANCE: XX ±.03	SHEET 7 OF 7	RATING: -	
XXX ±.01	REF: N/A		
XXX ±.005			



ITEM	NATIONAL PART #	OWI PART #	DESCRIPTION	REQ'D
1	6873010	INA1951	PLUG, 1-1/4" PIPE	1
2	2232059	INA1059	STRAINER, SUCTION	1
3	6875004	INA1952	PLUG, 1/2" COUNTERSUNK PIPE	1
4	2232063	INA1063	SPRICKET, 40T PUMP	1
5	2232524	INA1524	DEFLECTOR SHIELD	1
6	2232076	INA1076	TUBE, DIPSTICK	1
7	2232071	INA1071	ADAPTER, DIPSTICK	1
8	2232037	INA1037	DIPSTICK	1
9	7178077	INA1953	RIVET, DEFLECTOR DRIVE	4
10	2410022-224	INA3924	O-RING, BREATHER	1
11	2230035	INA3035	ADAPTER, BREATHER	1
12	2230058	INA3058	BREATHER	1
13	2232009	INA1009	GASKET, FILLER DOOR	1
14	2231010	INA1010	DOOR, FILLER	1
15	2232110	INA1110	ASSEMBLY, SHAFT C-195-125	1
-	2232210	INA1210	ASSEMBLY, SHAFT C-195-100	1
-	2232310	INA1310	ASSEMBLY, SHAFT C-195-80	1
-	2232410	INA1410	ASSEMBLY, SHAFT C-195-64	1
16	2232001	INA1001	HOUSING	1
17	6320100	INA1917	NUT, 5/8" JAM	1
18	5504003	INA1918	BOLT, 5/8" EYE	1
19	7000394-11	INA1945	SCREW, GAUGE BRACKET	2
20	7602058	INA1946	WASHER, GAUGE BRACKET	2
21	2232055	INA1055	ASSEMBLY, GAGE	1
22	2232053	INA1053	BRACKET, GAUGE	1
23	2232088	INA1088	PLATE, SEAL	1
24	2410031-210	INA3923	PACKING	8
25	7618024	INA3920	WASHER, 3/4" STAT-O-SEAL	8
26	7006448	INA1929	SCREW, BACK PLATE	8
27	2410022-449	INA1912	O-RING, BACK PLATE	1
28	7006266	INA1919	SCREW, CONTROL VALVE 7/16" X 3-1/2"	3
-	7006266	INA1920	SCREW, CONTROL VALVE 7/16" X 4"	2
29	2232040	INA1040	VALVE, PRESSURE CONTROL	1
30	2232064	INA1064	GASKET, CONTROL VALVE	1
31	2400001	INA1805	KEY, OUTPUT	1
32	2210216	INA3929	STRAINER	1
33	7802249	INA1932	CONNECTOR 1/4" X 1/4"	1
34	7400440	INA3943	TUBING 1/4" X 20"	1
35	2232008	INA1008	PLATE, COVER	1
36	2232036	INA1036	GASKET, COVER PLATE	1
37	7618018	INA3919	WASHER, 1/2" STAT-O-SEAL	10
38	7000303-11	INA3923	SCREW, DOOR	10
39	7813000	INA3934	NOZZLE, 1/8" SPRAY	1
40	7804103	INA3940	ELBOW, 1/4" X 90	1
41	2232072	INA1072	VALVE, SAFETY	1
42	5700021-96	INA1916	CHAIN, 40-1	1
43	5802101	INA1959	LINK, CONNECTING	1
44	7000307-11	INA1947	SCREW, PUMP PLATE	4
45	7602050	INA1948	WASHER, PUMP PLATE	4
46	2410022-434	INA1913	O-RING, PUMP	1
47	2232024	INA1024	PUMP, OIL	1
48	2232030	INA1030	PLATE, PUMP RETAINING	1
49	7000208-11	INA1949	SCREW, SUCTION STRAINER	1
50	7602041	INA1950	WASHER, SUCTION STRAINER	1
51	2410022-328	INA1914	O-RING, SUCTION STRAINER	1

DWG# 100-0575	DATE DRAWN: 10/31/07	JW	OIL WORKS INC.
TOLERANCE	USED IN: -		ASSEMBLY: OWI C195 TORQUE CONVERTER
SHEET 2 OF 7	EQUIPMENT: TORQUE CONVERTER		DESCRIPTION: PART LIST
XX ±.05	MODEL: C 195		PART #: -
XXX ±.005	RATING: -		

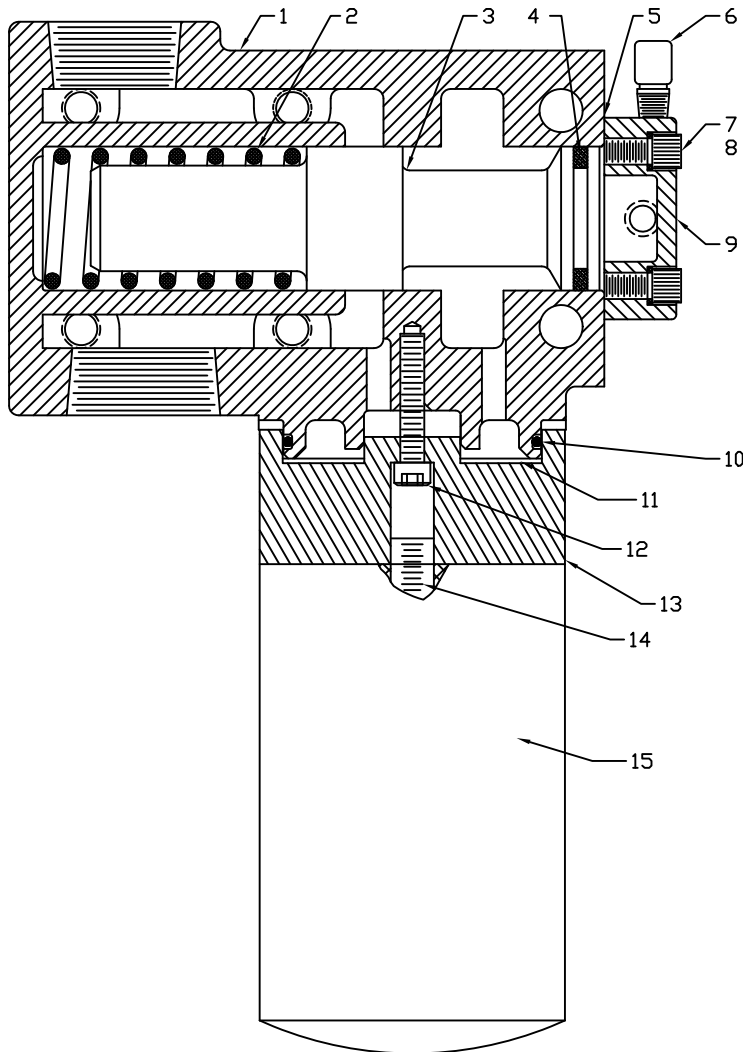




ITEM	NATIONAL PART #	OWI PART #	DESCRIPTION	REQ'D
1	2232003	1NA1003	SHAFT, OUTPUT	1
2	YS-4007	1NA1909	SEAL, REAL DIL	1
3	2232049	1NA1049	CAP, BEARING	1
4	7000396-11	1KS0934	SCREW, BEARING CAP	6
5	7602058	1NA1946	WASHER, BEARING CAP	6
6	6571612	1NA1926	PIN, SPROCKET & BEARING BOX	2
7	2232027	1NA1027	SHIM, .005 REAR	3
8	2232028	1NA1028	SHIM, .007 REAR	3
9	2232029	1NA1029	SHIM, .020 REAR	4
10	2232023	1NA1023	MOUNT, STATOR	1
11	2232006	1NA1006	BOX, SPROCKET & BEARING	1
12	2405011	1NA1925	SCREW, SPROCKET & BEARING BOX	12
13	2232026	1NA1026	WASHER, SPROCKET & BEARING BOX	12
14	ZR-4274	1NA1903	BEARING, SPROCKET & BEARING BOX	1
15	6910031	1NA1935	RING, SPROCKET & BEARING BOX SNAP	1
16	2232025	1NA1025	RING, BEARING LOCK	1
17	7029105	1NA1924	SCREW, STATOR SET	6
18	2232022	1NA1022	RING, STATOR RETAINING	1
19	7000319-11	1NA1944	SCREW, PUMP & DRIVE BELL	16
20	6310081	1NA3930	NUT, DRIVE BELL	16
21	2230019	1NA3019	WASHER, PUMP & DRIVE BELL	32
22	2232104	1NA1104	PUMP & DRIVE BELL C-195-125	1
-	2232204	1NA1204	PUMP & DRIVE BELL C-195-100	1
-	2232304	1NA1304	PUMP & DRIVE BELL C-195-80	1
-	2232404	1NA1404	PUMP & DRIVE BELL C-195-64	1
23	2232105	1NA1105	TURBINE & HUB C-195-125	1
-	2232205	1NA1205	TURBINE & HUB C-195-100	1
-	2232305	1NA1305	TURBINE & HUB C-195-80	1
-	2232405	1NA1405	TURBINE & HUB C-195-64	1
24	2232103	1NA1103	STATOR C-195-125	1
-	2232203	1NA1203	STATOR C-195-100	1
-	2232303	1NA1303	STATOR C-195-80	1
-	2232403	1NA1403	STATOR C-195-64	1
25	1NA1804	1NA1804	RING, TURBINE RETAINING	1
26	Z1-2755	1NA1906	ASSEMBLY, FRONT BEARING	1
27	2232015	1NA1015	PLATE, BEARING RETAINING	1
28	2401510	1KS0932	SCREW, RETAINING PLATE	3
29	6510710	1NA1927	PIN, STATOR DOWEL	4
30	5506309	1NA1928	BOLT, STATOR PLACE	5
31	6874004	1NA1954	PLUG, 1/2" PIPE	2
32	2232047	1NA1047	RING, 5-3/4" SEAL	1
33	2232048	1NA1048	CARRIER, RING SEAL	1
34	2232066	1NA1066	RING, 4" SEAL	1
35	6572416	1NA3931	PIN, STATOR MOUNT ROLL	1
36	Z1-4007	1NA1907	ASSEMBLY, SHAFT BEARING	1
37	Z1-4003	1NA1904	ASSEMBLY, SHAFT BEARING	1

DWG# 100-0575		DATE DRAWN: 10/31/07 JW	OIL WORKS INC.
TOLERANCE: XX ±.05		USED IN: -	ASSEMBLY: OWI C195 TORQUE CONVERTER
SHEET 6 OF 7		EQUIPMENT: TORQUE CONVERTER	DESCRIPTION: PART LIST, SHAFT ASSEMBLY
REF: N/A		MODEL: C 195	PART #: -
		RATING: -	





ITEM	NATIONAL PART #	OWI PART #	DESCRIPTION	REQ'D
1	2232041	1NA1041	BODY, CONTROL VALVE	1
2	2232042	1NA1042	SPRING, CONTROL VALVE	1
3	2232043	1NA1043	SPOOL, CONTROL VALVE	1
4	2232044	1NA1044	RING, CONTROL VALVE SEAL	1
5	2232045	1NA1045	GASKET, CONTROL VALVE CAP	1
6	7804101	1NA3939	ELBOW, 2"	1
7	7006157	1NA3932	SCREW, VALVE CAP	4
8	7612012	1NA3933	COLLAR, VALVE CAP	4
9	2232046	1NA1046	CAP, CONTROL VALVE	1
10	2410022-234	1NA3927	O-RING, SPIN ON ADAPTER	1
11		1NA3957	GASKET, SPIN ON ADAPTER	1
12		1NA3958	SCREW, SPIN ON ADAPTER	1
13		1NA3807	ADAPTER, SPIN ON	1
14		1NA3808	NIPPLE, SPIN ON ADAPTER	1
15		1NA3928	FILTER, SPIN ON	1

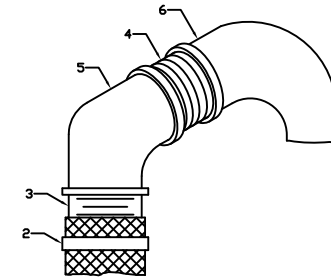
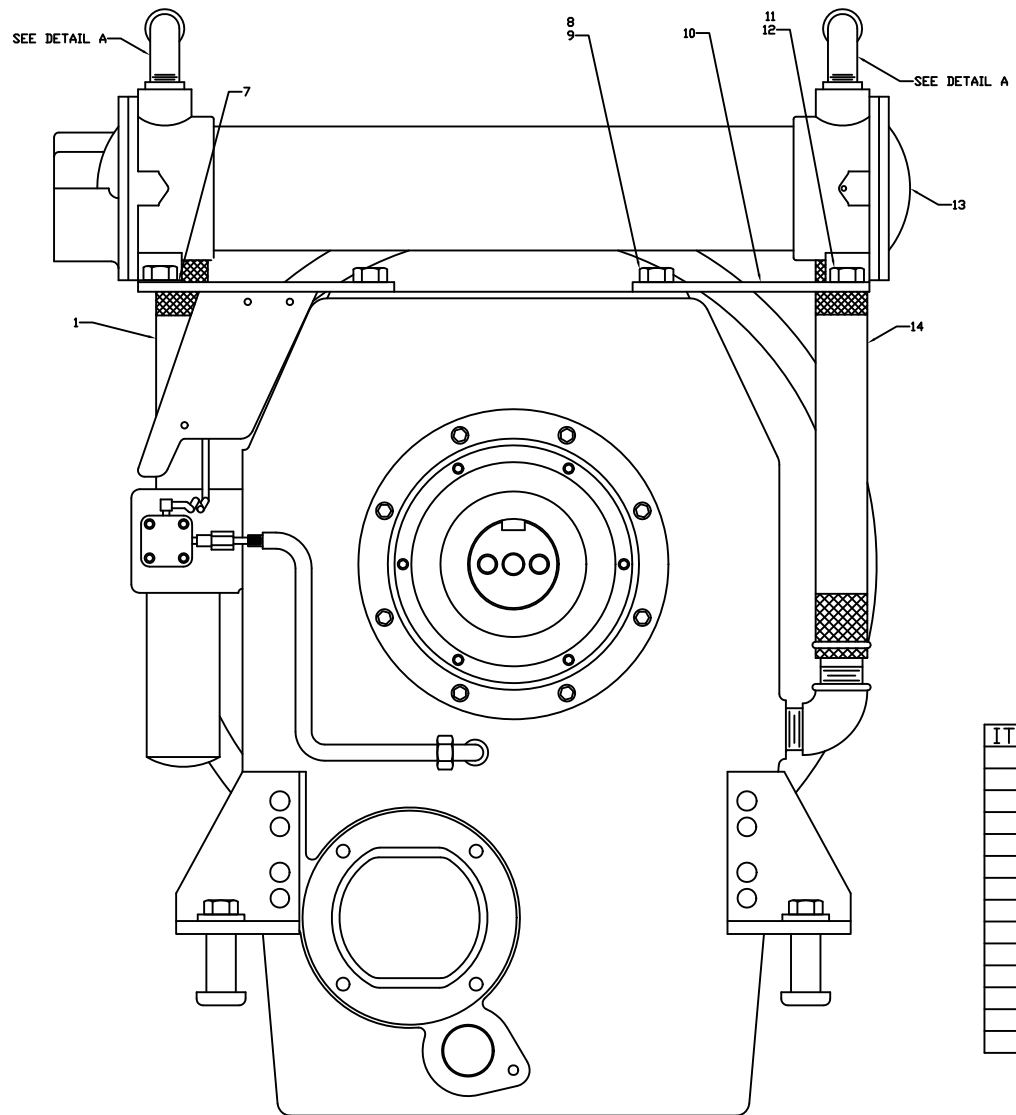
DWG# 100-0131
 TOLERANCE: XX ±.03, XXX ±.01, XXXX ±.005
 SHEET 3 OF 7
 REF: N/A

DATE DRAWN: 10/31/07 | JW
 USED IN: -
 EQUIPMENT: TORQUE CONVERTER
 MODEL: C 195
 RATING: -

OIL WORKS INC.
 ASSEMBLY: OWI C195 TORQUE CONVERTER
 DESCRIPTION: PART LIST, PRESSURE CONTROL VALVE
 PART #: 1NA1040 (2232040)



REV	BY	DATE	REV FOR	REV BY
X	XXX	XX/XX/XX	XX	XX



DETAIL A

ITEM	NATIONAL PART #	OWI PART #	DESCRIPTION	REQ'D
1	6100008	1NA1933	HOSE, HEAT EXCHANGER X 14"	1
2	7802077	1NA1960	CLAMP, HOSE	4
3	6825001	1NA1961	NIPPLE, 1-1/4" KING	4
4	6817101	1NA1962	NIPPLE, 1-1/4" X 3"	2
5	6826010	1NA1937	ELBOW, 1-1/4" 90°	2
6	6829010	1NA1963	ELBOW, 1-1/4" 90° STREET	2
7	2232067	1NA1067	BAR, MOUNTING	1
8	7000394-11	1NA1945	SCREW, SUPPORT PLATE	4
9	7602058	1NA1946	WASHER, SUPPORT PLATE	4
10	2232017	1NA1017	PLATE, SUPPORT	1
11	7000206-11	1NA1964	SCREW, HEAT EXCHANGER	4
12	7602041	1NA1950	WASHER, HEAT EXCHANGER	4
13	2290013	1NA0901	EXCHANGER, 6" X 24" HEAT	1
14	6100008	1NA1934	HOSE, HEAT EXCHANGER X 21"	1

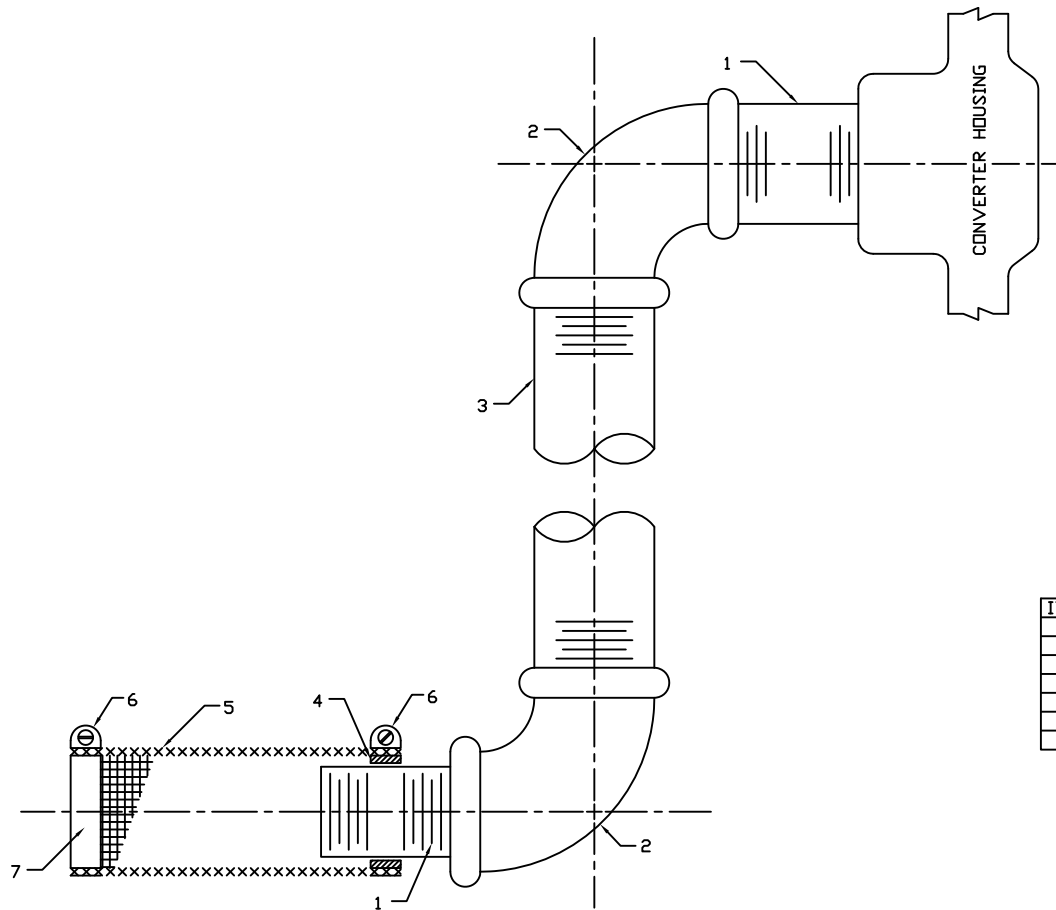
DWG# **100-0578**
 TOLERANCE: XX ±.08, XXX ±.005
 SHEET 4 OF 7
 REF: N/A

DATE DRAWN: 10/31/07 | JW
 USED IN: -
 EQUIPMENT: TORQUE CONVERTER
 MODEL: C 195
 RATING: -

OIL WORKS INC.
 ASSEMBLY: OWI C195 TORQUE CONVERTER
 DESCRIPTION: PART LIST, HEAT EXCHANGER AND PIPING
 PART #: 1NA1014 (2232014)



REV	BY	DATE	REV	BY
X	XXX	XX/XX/XX	XX	XX

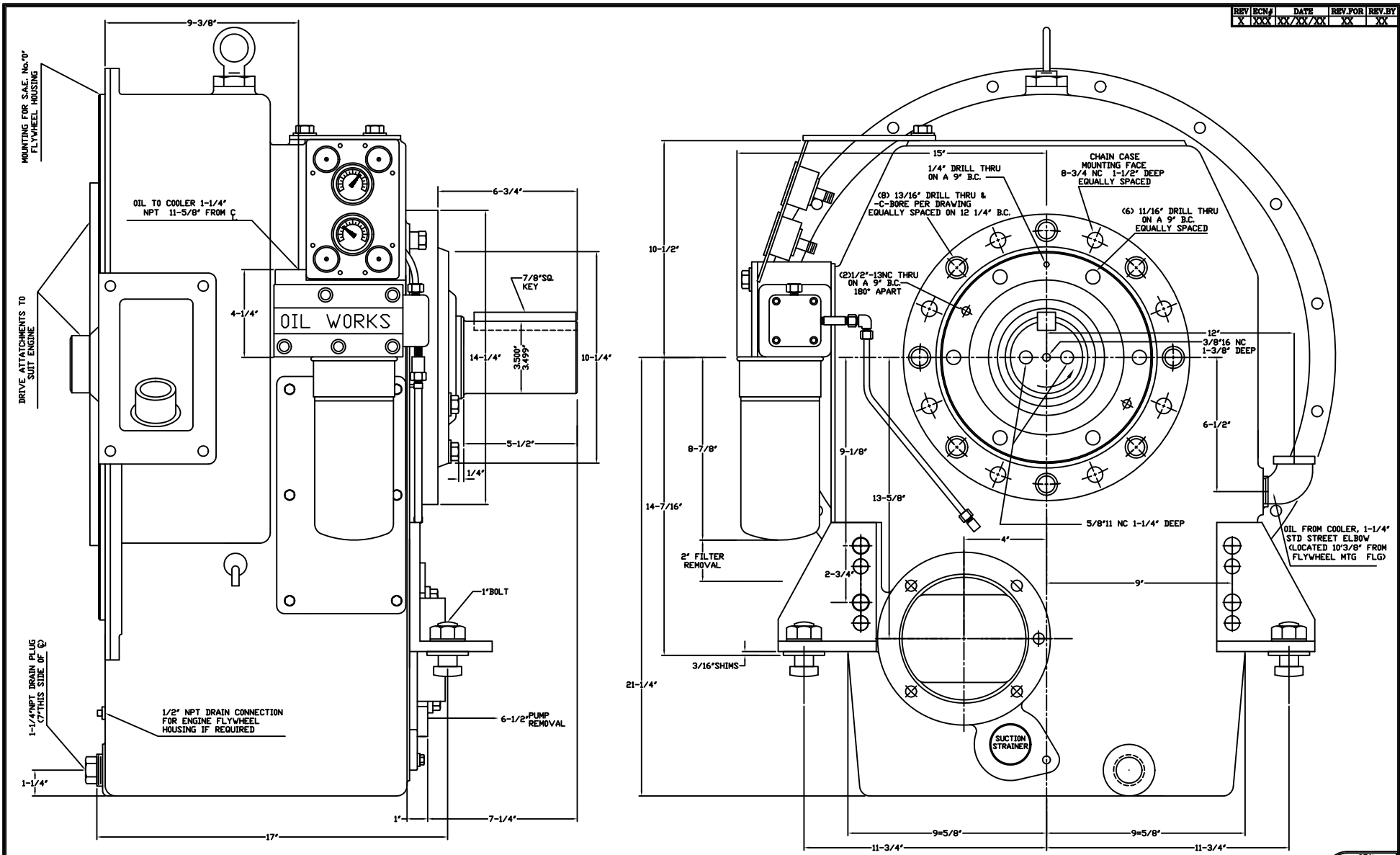


ITEM	NATIONAL PART #	OWI PART #	DESCRIPTION	REQ'D
1	6817099	1NA1938	NIPPLE, 1-1/4" X 2"	2
2	6826010	1NA1937	ELBOW, 1-1/4" X 90°	2
3	6817159	1NA1939	NIPPLE, 1-1/4" X 10"	1
4	2232065	1NA1065	RING, SCREEN	1
5	2232021	1NA1021	SCREEN	1
6	7802077	1NA1960	CLAMP, HOSE	2
7	2232020	1NA1020	PLUG, SCREEN	1

DWG# 100-0138		DATE DRAWN: 10/31/07 JW	OIL WORKS INC.
TOLERANCE	SHEET 5 OF 7	EQUIPMENT: TORQUE CONVERTER	ASSEMBLY: OWI C195 TORQUE CONVERTER
XX ±.03	REF: N/A	MODEL: C 195	DESCRIPTION: PART LIST, DESURGE AND PIPING
XXX ±.005		RATING: -	PART #: 1NA1057 (2232057)



REV	ECN#	DATE	REV.FOR	REV.BY
X	1000	XX/XX/XX	XX	XX



DWG# 100-0650		DATE DRAWN: 10/31/07 JW	OIL WORKS INC.
TOLERANCE		USED IN: -	ASSEMBLY: OWI C195 TORQUE CONVERTER
XX ± .03	SHEET 1 OF 7	EQUIPMENT: TORQUE CONVERTER	DESCRIPTION: ASSEMBLY DIMENSIONS
XX ± .01	REF: N/A	MODEL: C 195	PART #: -
XX ± .005		RATING: -	

