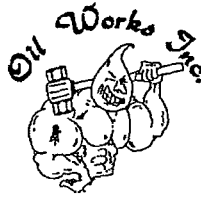


Inter-American Oil Works, LTD.

P.O. Box 69170
2416 N F.M. 1936
ODESSA, TEXAS 79769-0170
OILWORKSINC@OILWORKSINC.COM

Telephone 432-381-5265
800-531-3273
Fax 432-381-7526
WWW.OILWORKSINC.COM



OWI 1000 EXPLORER WIRELINE UNIT

OPERATING INSTRUCTIONS

WIRELINE UNIT MUST BE RIGIDLY ATTACHED
TO A RIGID SURFACE PRIOR TO ANY WIRELINE OPERATION

LIGHT WEIGHT TOOL BRAKING

1. Do Not Run electric motor.
2. Disengage shifting clutch.
3. Let tool freefall by controlling speed with hand brake application.
4. Read depth on meter counter.

DYNAMIC BRAKING

1. Engage clutch by shifting clutch lever to the "IN" position. Check for dog engagement through the window in clutch and motor guard. It may be necessary to rotate spool slightly in either direction to align dogs with hydraulic motor.
2. Let tool freefall, using hydraulic governor for braking, use manual braking system for backup.
3. Read depth on meter counter.
4. For hand cranking or other purposes, move clutch lever to the "OUT" position.

RETRIEVING WIRE

1. Be certain clutch is engaged.
2. Engage hand brake.
3. Engage hydraulic governor handle.
4. Disengage hand brake.
5. Apply hydraulic governor handle slowly until spool begins to turn.
6. Power and speed are controlled by closing and opening hydraulic governor.
7. System pressure gauge will indicate system pressure in PSI.

CAUTION

Do not attempt to engage or disengage clutch with hydraulic motor or spool rotating.

MAINTENANCE

LUBRICATION

The wireline unit has five grease zerk fittings as follows:

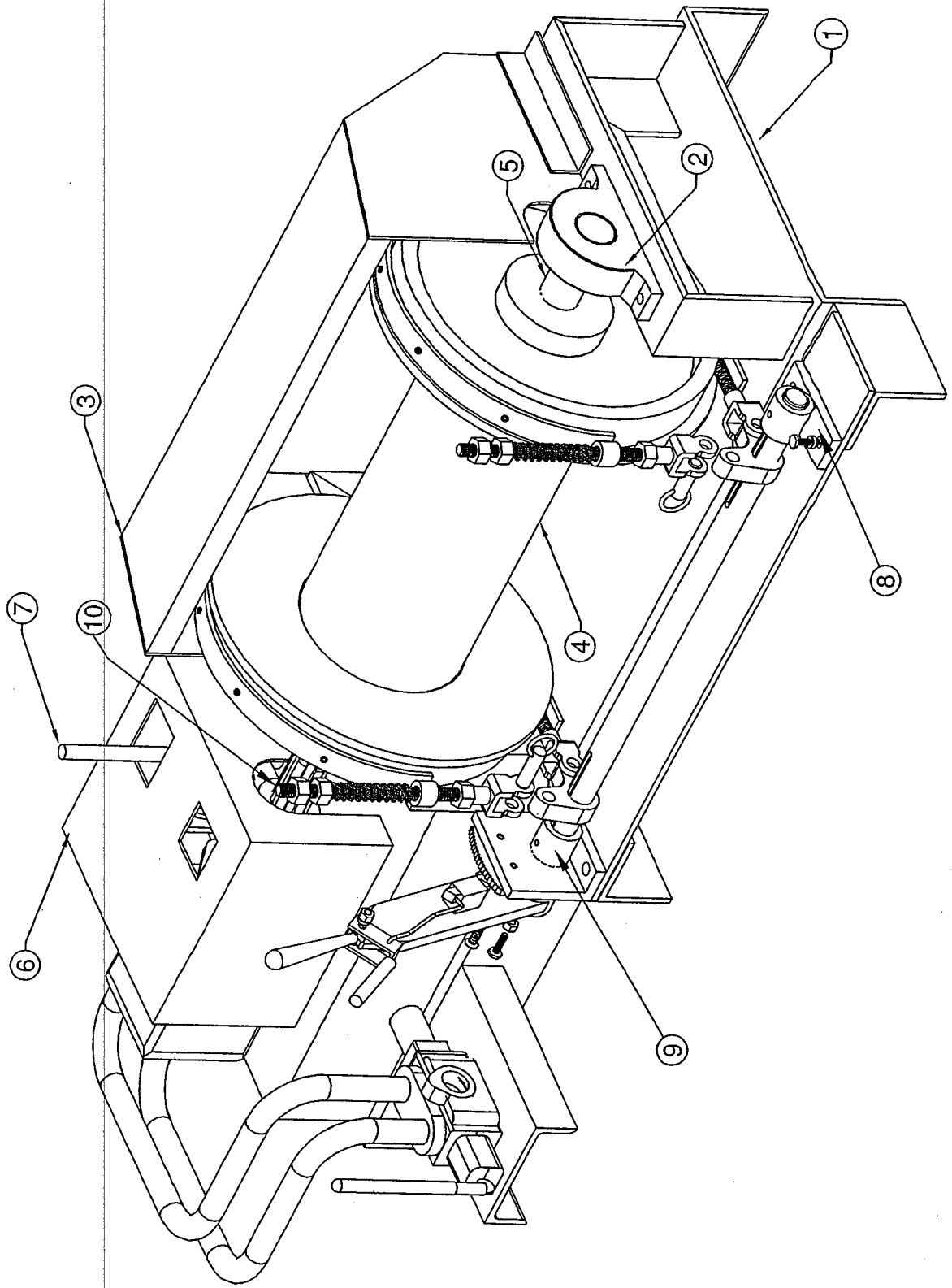
1. Two spool shaft pillow block bearings (Item No. 2 on Explorer Assembly Drawing).
2. Brake shaft support (Item No. 8) and brake shaft and ratchet support (Item No. 9 on Explorer Brake Assembly Drawing).
3. Yoke assembly (Item No. 10 on Shifting Yoke Assembly Drawing).

The pillow block bearings need very little lubrication, because they are sealed bearings and should not be filled to the point of rupturing the seals. One shot of good quality grease from a hand grease gun every month should be sufficient.

The brake shaft supports should be lubricated as needed. Once every three months is usually sufficient for normal operating conditions.

The yoke assembly will require the removal of the clutch and motor guard (Item No. 6 on Explorer Assembly Drawing). The yoke should be lubricated as needed, usually every month. When the clutch and motor guard is removed, apply a small amount of grease to the spool shaft spline while sliding dog clutch back and forth.

WIRELINE ASSEMBLY

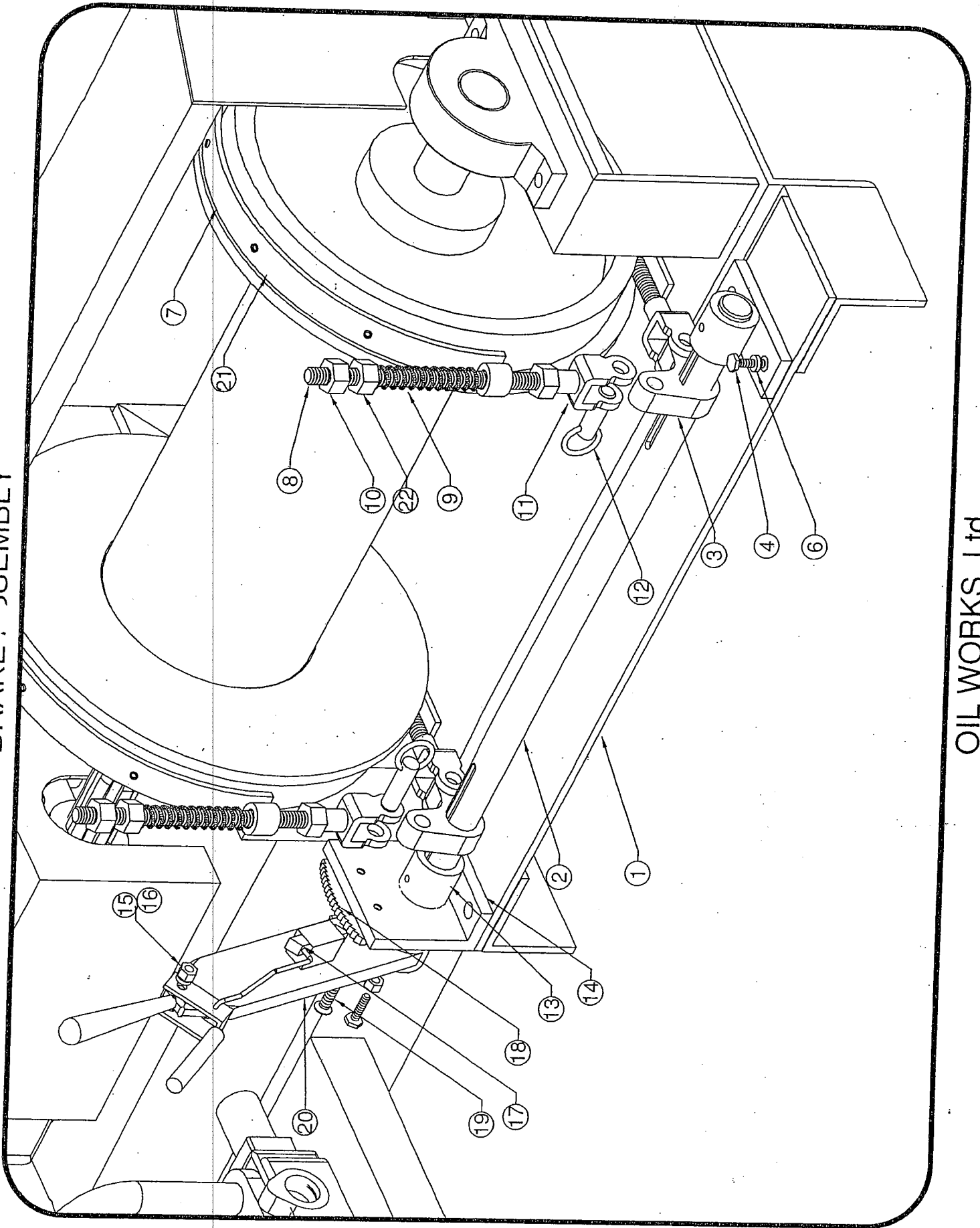


OIL WORKS, Ltd.

WIRELINE TOOL

ITEM NO.	QTY.	DESCRIPTION	PART NO.
1.	1	SKID	NO P/N
2.	2	PILLOW BLOCK BEARING	12005
3.	1	SPOOL GUARD	12006
4.	1	SPOOL	12003
5.	1	SPOOL SHAFT	12004
6.	1	CLUTCH AND MOTOR GUARD	12007
7.	1	SHIFTING YOKE ASSY.	12010
8.	1	SMALL BRAKE SUPPORT	01-0170-001
9.	1	LARGE BRAKE SUPPORT	01-0172-001
10.	1	BRAKE ADJUSTMENT BOLT	02-0118-003

BRAKE ASSEMBLY



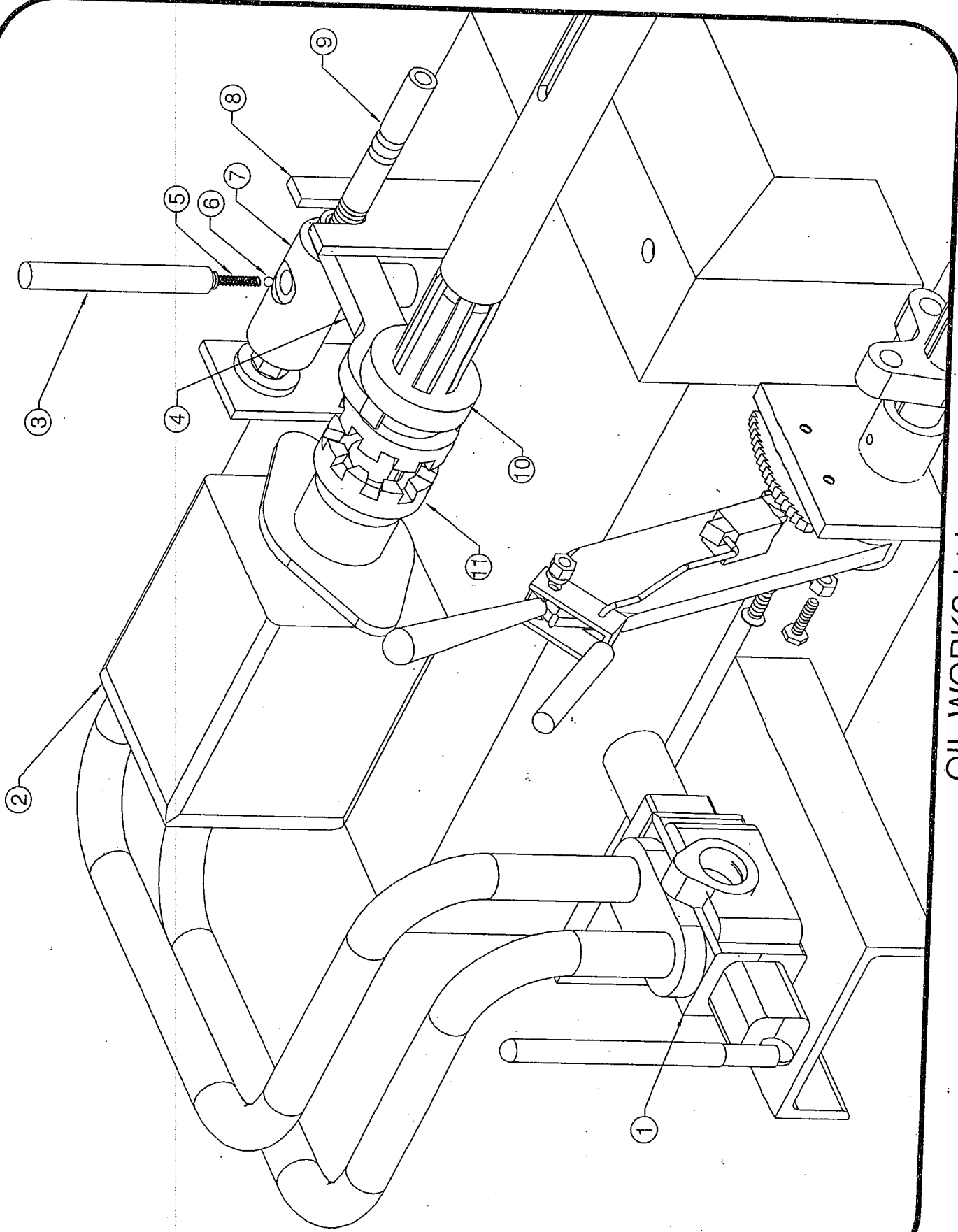
ITEM NO.	QTY.	DESCRIPTION	PART NO.
1.	1	BASE PLATE	16091
2.	1	BRAKE SHAFT W/KEYS	16092
3.	2	BELL CRANK	16093
4.	1	BRAKE SHAFT SUPPORT BRKT.	16094
5.	4	3/8-16 HEX HEAD BOLT X 1 1/2"	16095
6.	4	3/8" LOCK WASHER	16096
* 7.	2	BRAKE BAND W/LINING	12040
** 8.	2	BRAKE ADJ. ROD	16098
9.	2	BAND ADJ. SPRINGS	16099
10.	6	1/2-13 HEX NUT	16100
11.	4	CLEVIS PIN	NO P/N
12.	4	COTTER PIN	NO P/N
13.	1	SHAFT COLLAR	16101
14.	1	BRAKE SHAFT & RACHET SUPPORT	16102
15.	1	5/16-18 HEX NUT	16103
16.	1	5/16" LOCK WASHER	16104
17.	1	BRAKE LEVER STOP	16105
18.	1	RACHET	16106
19.	1	5/16-18 X1-1/4" FLATHEAD	16107
20.	1	BRAKE LEVER ASSEMBLY	16108
21.	1	BRAKE LINING W/ RIVETS	NO P/N
22.	1	SPRING GUIDE NUT (1/2-13)	16109
23.	1	3/8-16 X 1-1/4 HEX HEAD	16110
24.	1	1/8-16 NUT	16111

* INCLUDES ITEMS 11, 12, 21

** INCLUDES 11 & 12

OIL WORKS, Ltd.

DRIVE ASSEMBLY



OIL WORKS, Ltd.

DRIVE ASSEMBLY

ITEM NO.	QTY.	DESCRIPTION	PART NO.
1.	2	CHECK VALVE	16060
2.	1	HYDRAULIC MOTOR	16019
* 3.	1	SHIFTING HANDLE	12010a
* 4.	1	FORK	12010d
* 5.	1	SPRING	12010b
* 6.	1	BEARING	12010c
* 7.	1	FORK SLEEVE	12010e
* 8.	1	SHIFTING FORK BRACKET	12010f
* 9.	1	SHIFTING FORK SHAFT	12010g
10.	1	SPLINED DOG CLUTCH	12009
11.	1	KEYED DOG CLUTCH	12008

* INCLUDED IN SHIFTING YOKE ASSEMBLY P/N -12010